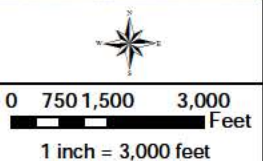
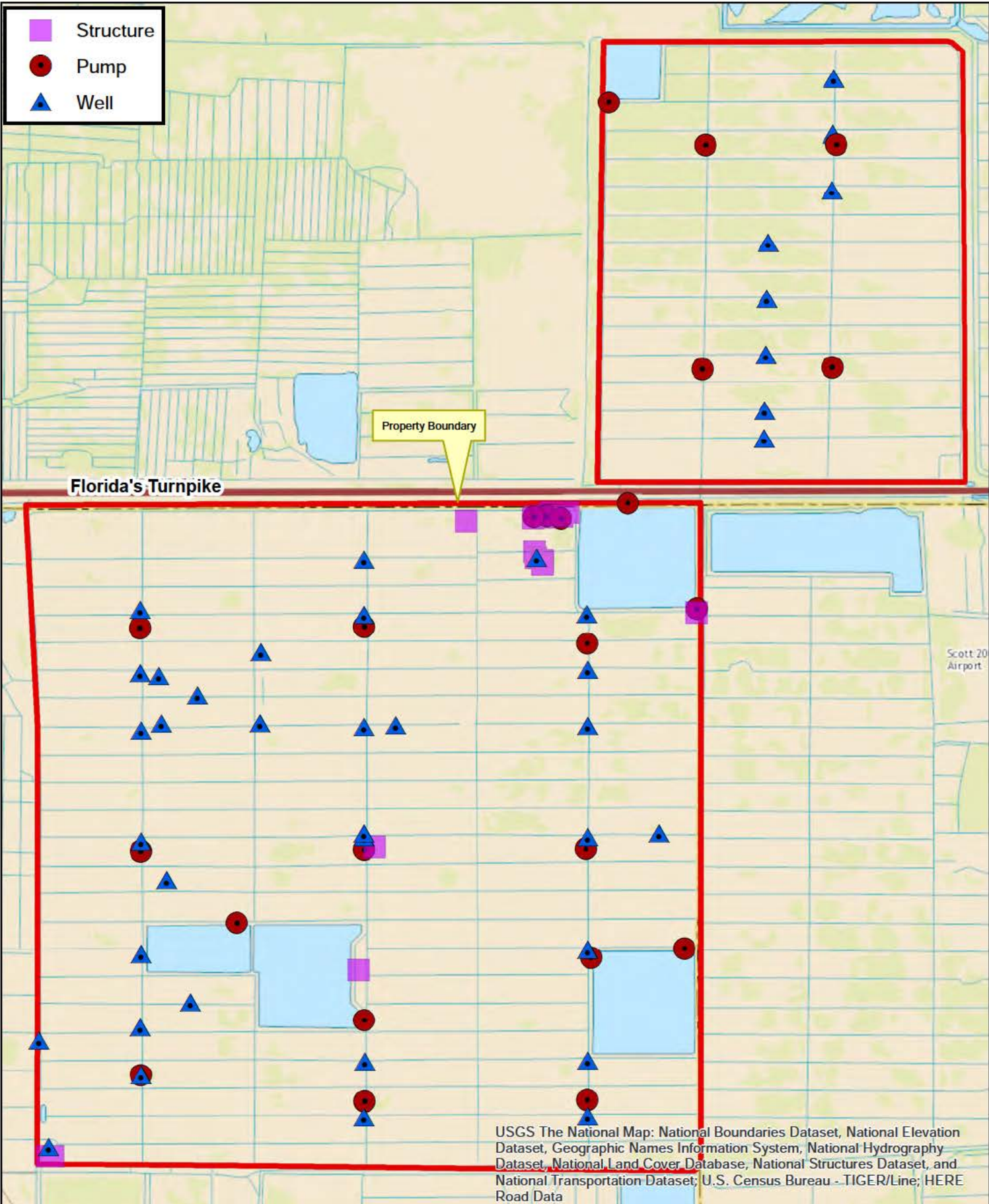


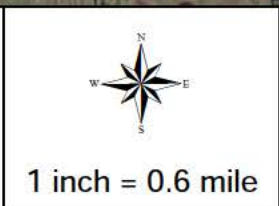
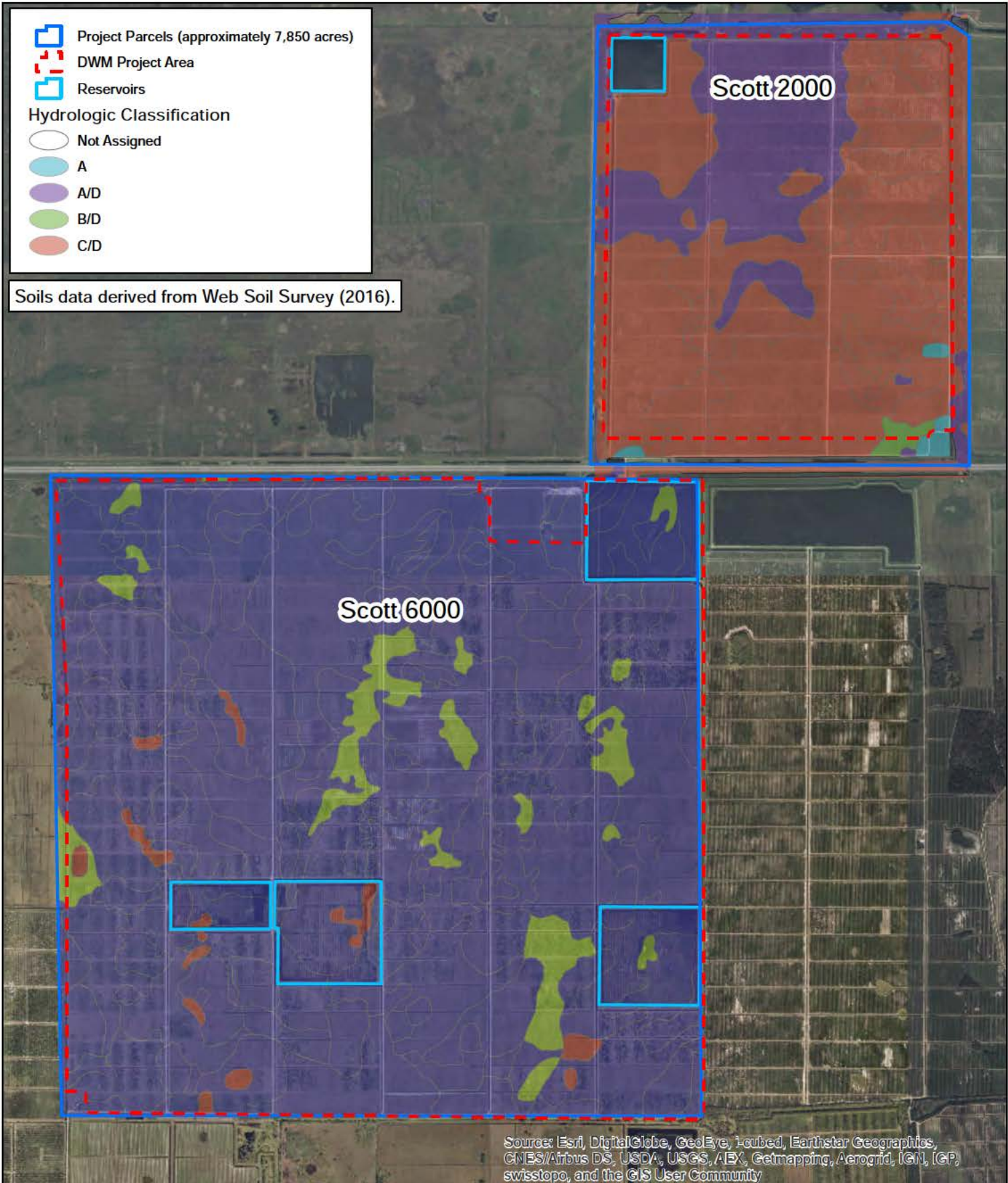
Project Location Map
 Scott DWM Project Site
 Indian River and
 Okeechobee Counties



Hazen




Site Map
Scott Properties
 Indian River and Okeechobee
 Counties, Florida




NRCS SOILS MAP


Scott 2000 and 6000 Sites
 Evans Grove Lands, LLC
 Indian River and Okeechobee Counties


Legend


 Property Boundary


Florida Land Use and Cover Classification

 2210 - Citrus Groves

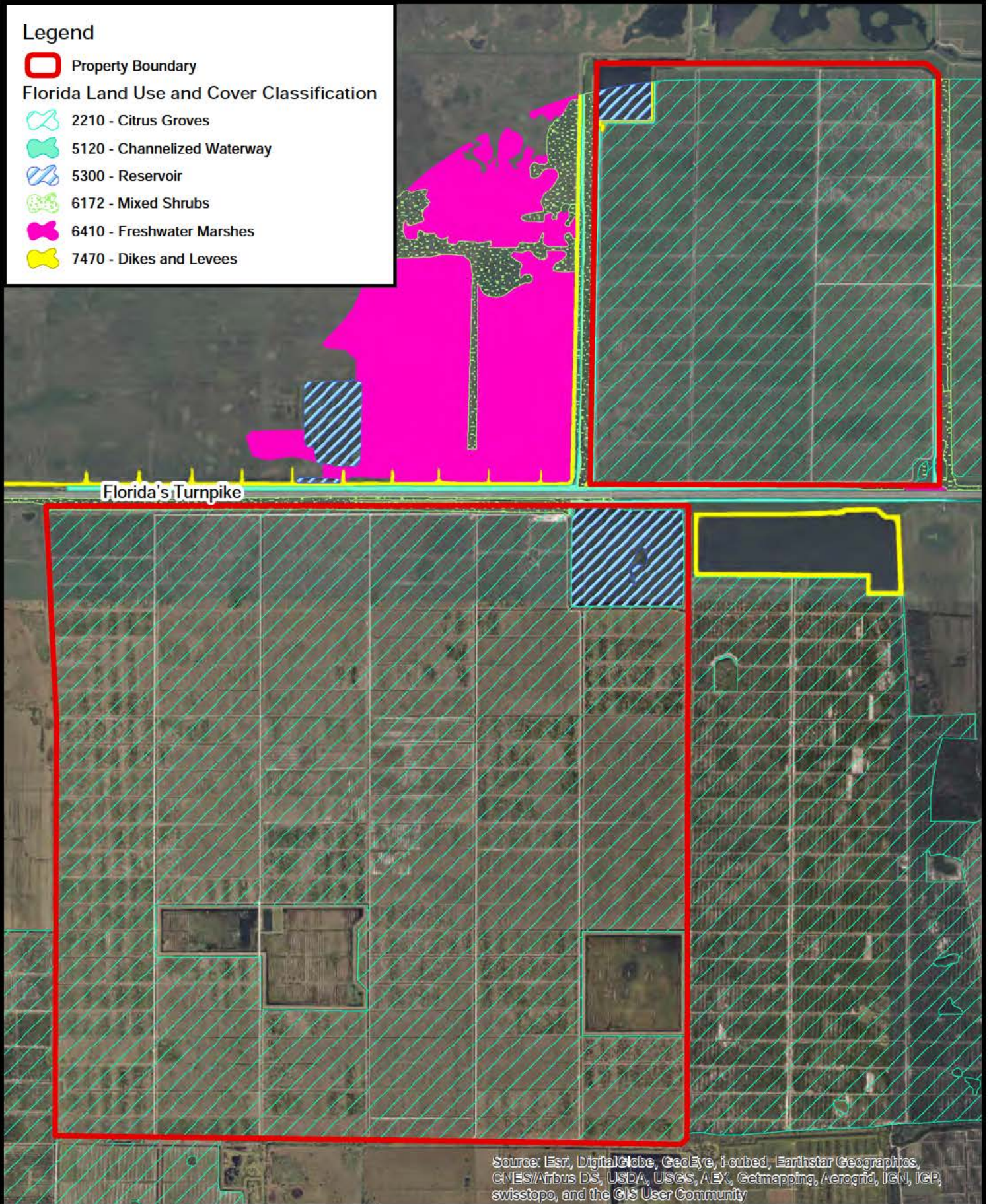
 5120 - Channelized Waterway

 5300 - Reservoir

 6172 - Mixed Shrubs

 6410 - Freshwater Marshes

 7470 - Dikes and Levees



Source: Esri, DigitalGlobe, GeoEye, i-cubed, Earthstar Geographics, CNES/Airbus DS, USDA, USGS, AEX, Getmapping, Aerogrid, IGN, IGP, swisstopo, and the GIS User Community

SCALE

0 0.25 0.5
Mile

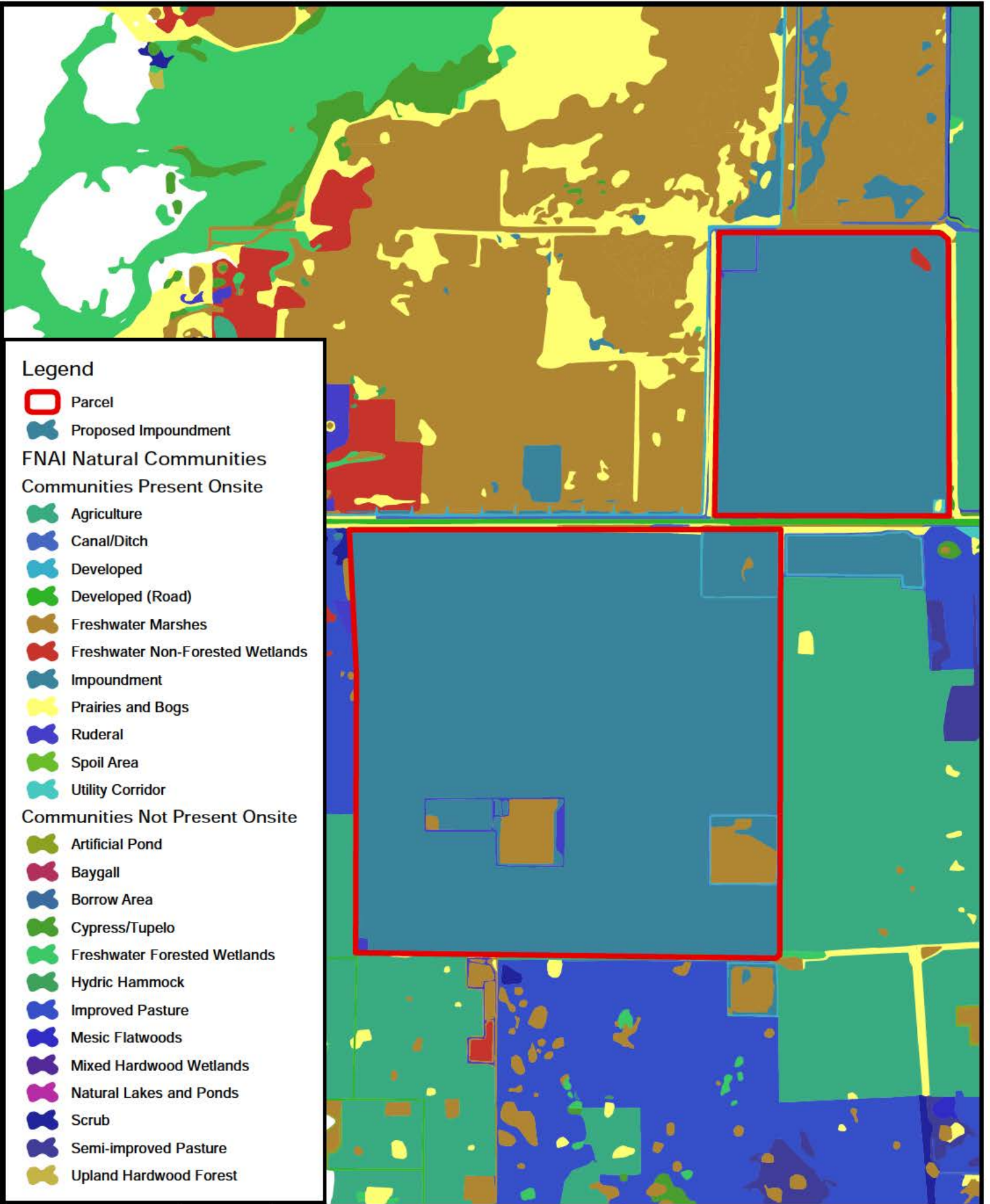
1 inch = 0.7 mile



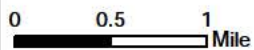
Hazen

Florida Land Use and Cover Classification

Scott Properties
Evans Grove Lands, Inc.
Indian River and Okeechobee Counties



SCALE



1 inch = 1 mile



Hazen

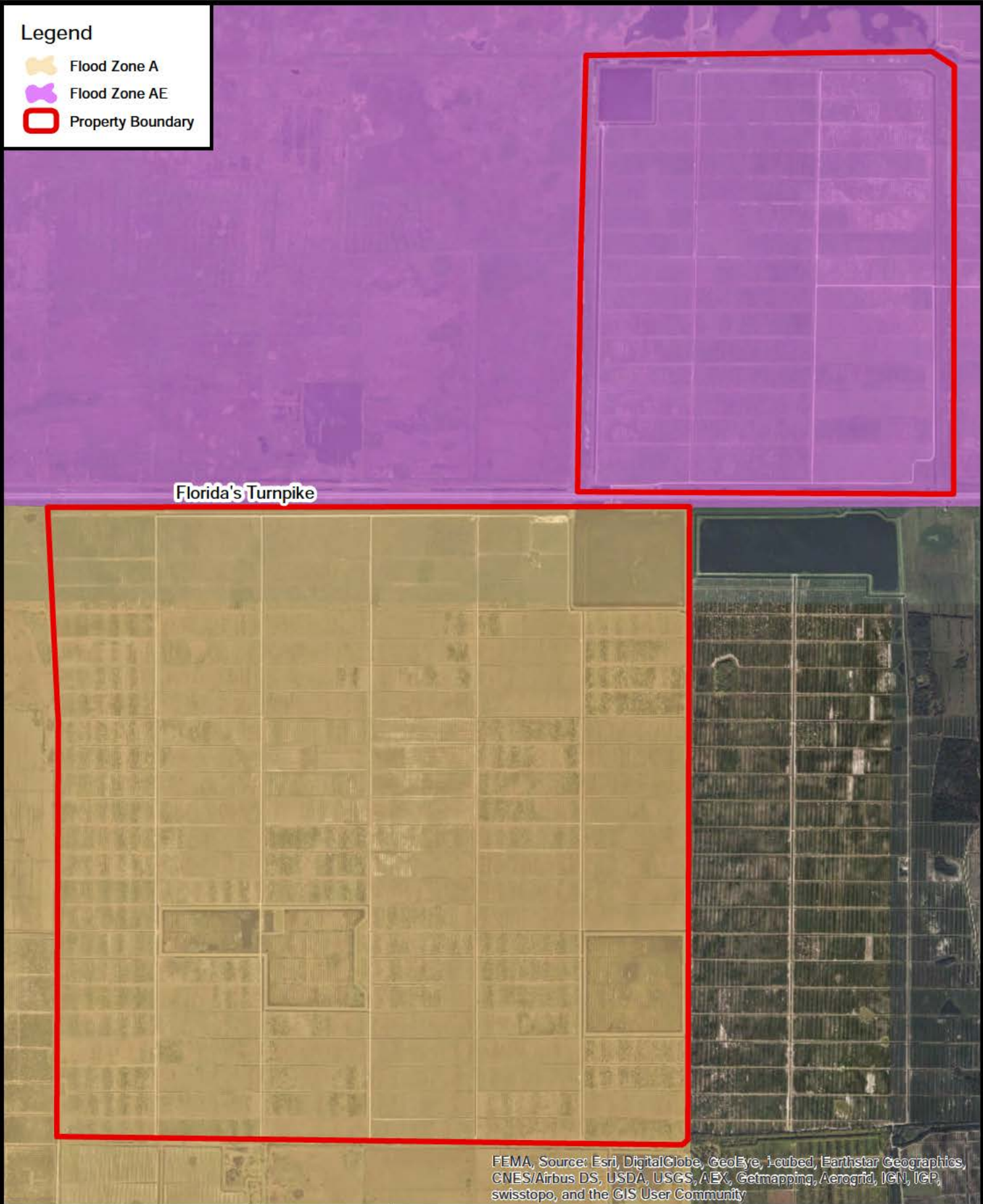


Florida Natural Areas Inventory
Proposed Natural Communities

Scott Properties
Okeechobee and
Indian River Counties, Florida

Legend

-  Flood Zone A
-  Flood Zone AE
-  Property Boundary



Florida's Turnpike

FEMA, Source: Esri, DigitalGlobe, GeoEye, I-cubed, Earthstar Geographics, CNES/Airbus DS, USDA, USGS, AEX, Getmapping, Aerogrid, IGN, IGP, swisstopo, and the GIS User Community

SCALE

0 0.25 0.5 Mile

1 inch = 0.7 mile



Hazen

FEMA Special Flood Hazard Map

Scott Properties
Evans Grove Lands, Inc.
Indian River and Okeechobee Counties



Reservoir

Ditch Length
 Interior Ditches (yellow) = 134,410 feet
 Perimeter Ditches (pink) = 37,561 feet

Source: Esri, DigitalGlobe, GeoEye, i-cubed, Earthstar Geographics, CNES/Airbus DS, USDA, USGS, AEX, Getmapping, Aerogrid, IGN, IGP, swisstopo, and the GIS User Community

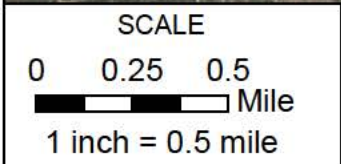
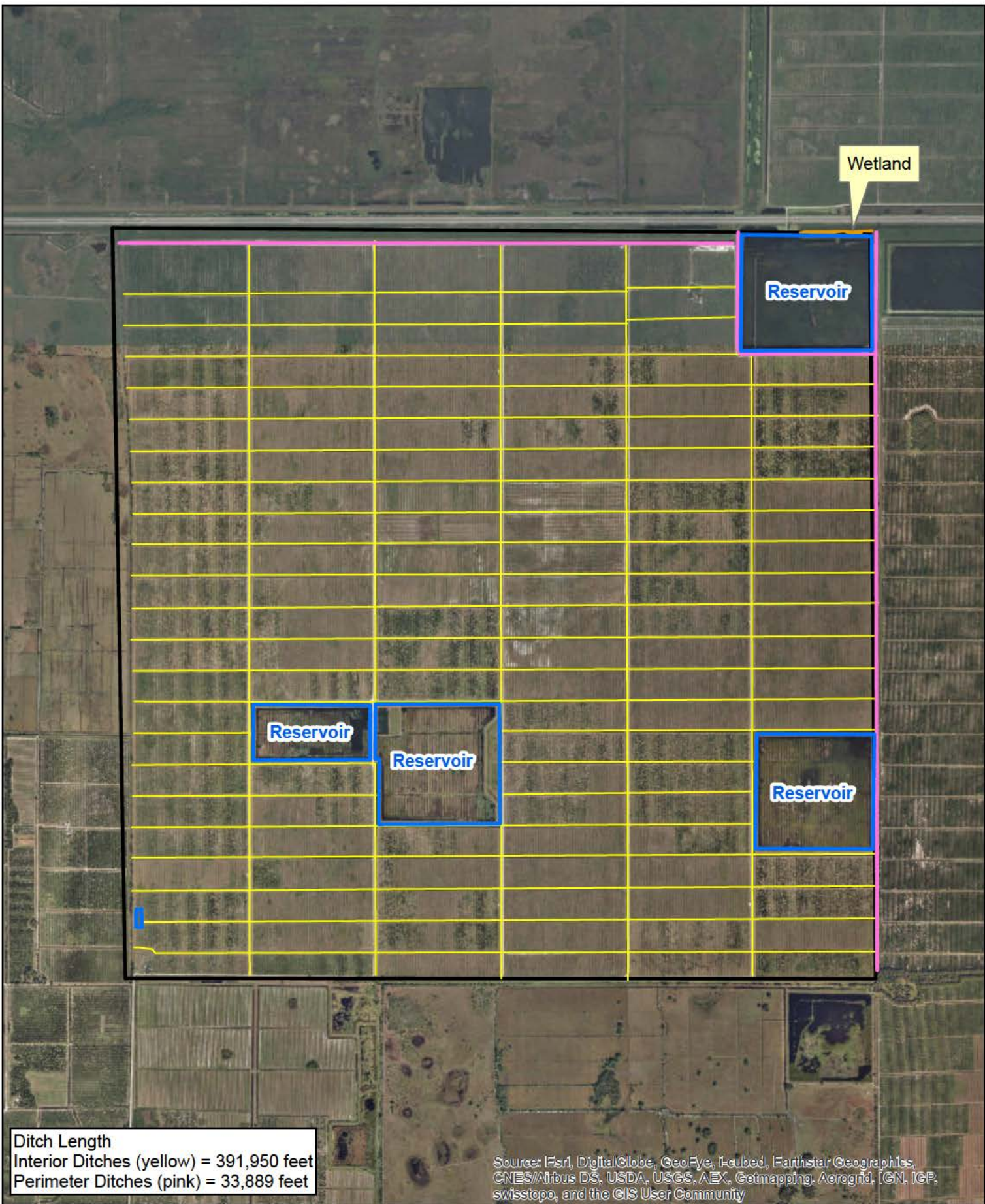
SCALE

0 0.125 0.25
 Mile
 1 inch = 0.25 mile



Hazen

Evans 2000 Property
 Evans Properties, Inc.
 Indian River County, Florida



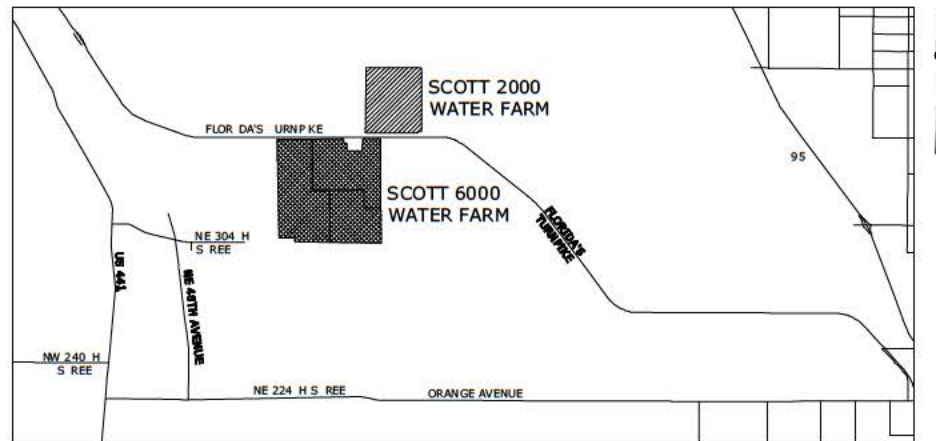
Evans 6000 Property

Evans Properties, Inc.
 Okeechobee County, Florida

SCOTT WATER FARM DESIGN AND PERMITTING



PREPARED FOR:
EVANS PROPERTIES, INC.

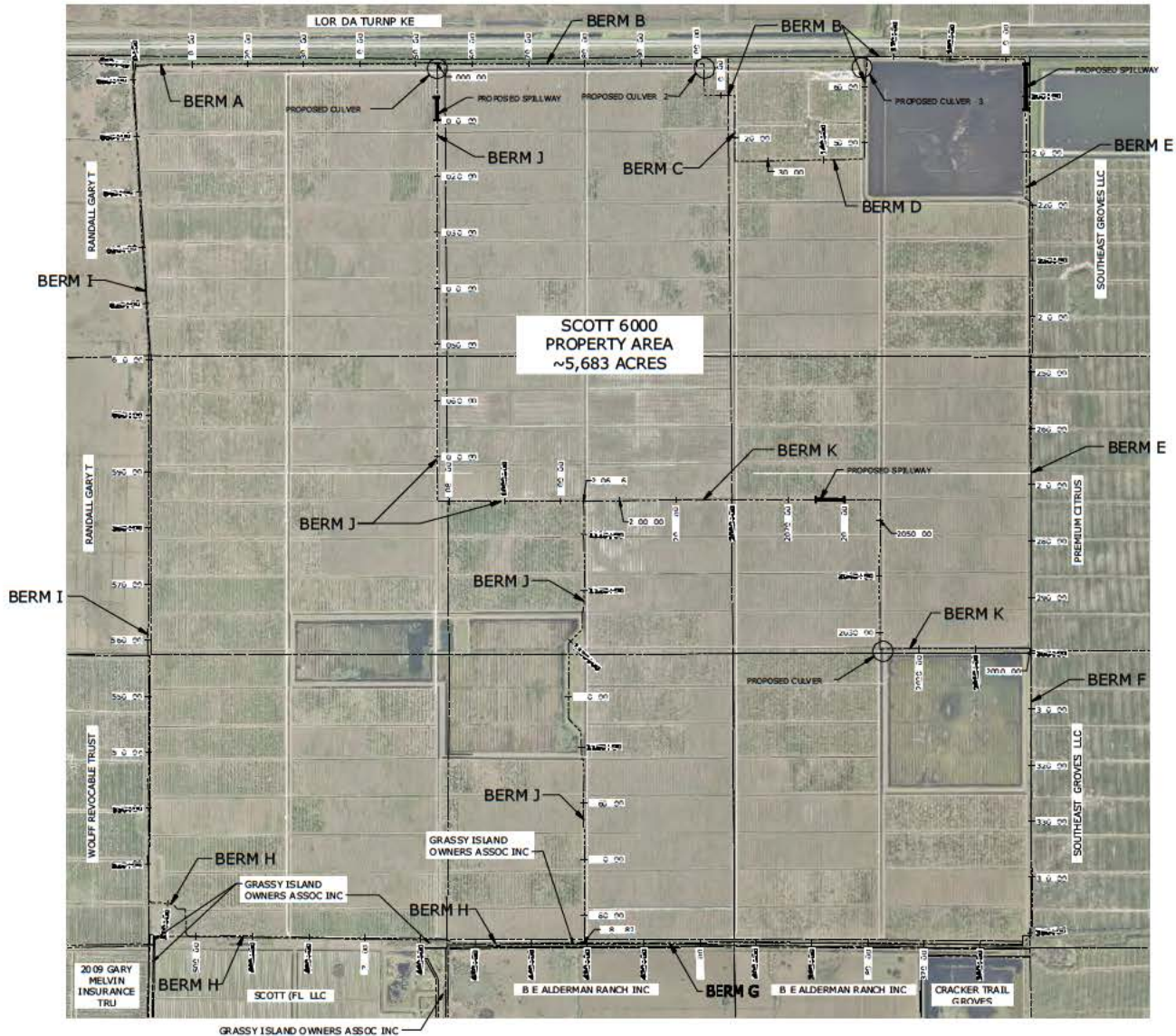


FEBRUARY 2017
50% DESIGN

PREPARED BY:

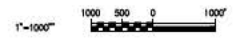
Hazen

HAZEN AND SAWYER
2101 CORPORATE BOULEVARD, SUITE 301
BOCA RATON, FLORIDA 33431
LICENSE NO. : 2771



- GENERAL NOTES:**
- BOUNDARY SURVEY SUPPLIED BY LBPH (3/28/2016)
 - STATIONING FOLLOWS APPROXIMATE CANAL OF BANK. SEE SHEET 602 AND 603 FOR BERM SECTIONS
 - ALL EDGES OF CANAL AND ROAD LINES ARE APPROXIMATE CON RAC OR SHALL PROVIDE SPECIFIC TURNING RADIUS CALCULATIONS UPON FINALIZATION OF FIVE YEAR HS GRADING SHALL OCCUR FROM THE BASELINE OWNERS HEREIN ERROR OF HEREON UNLESS SPECIFICALLY NOTED OTHERWISE
 - VERTICAL ALIGNMENT FOR ALL SECTIONS IS NORTH AMERICAN VERICAL ALIGNMENT OF 988 (NAVD 88)
 - BERM GEOMETRY DEPENDS ON CANAL CROSSINGS TO BE INCLUDED WITH SUBMITTAL

LEGEND
 _____ PROPERTY BOUNDARY



PROJ. EC	CRG
DESIGNED BY	ACE
DRAWN BY	ACE
CHECKED BY	
IF THIS BAR DOES NOT MEASURE WHEN DRAWING IS NOT TO FULL SCALE	
REV	1 USED FOR DATE BY

PRELIMINARY DRAWING
 DO NOT USE FOR
 CONSTRUCTION

Hazen
 HAZEN AND SAWYER
 20 CORPORATE BOULEVARD, SUITE 30
 BOCA RATON, FLORIDA 3343
 LICENSE NO. 277

OKEECHOBEE
 FLORIDA
 SCOTT WATER FARM DESIGN

SCOTT 6000
 CIVIL
 OVERALL PLAN

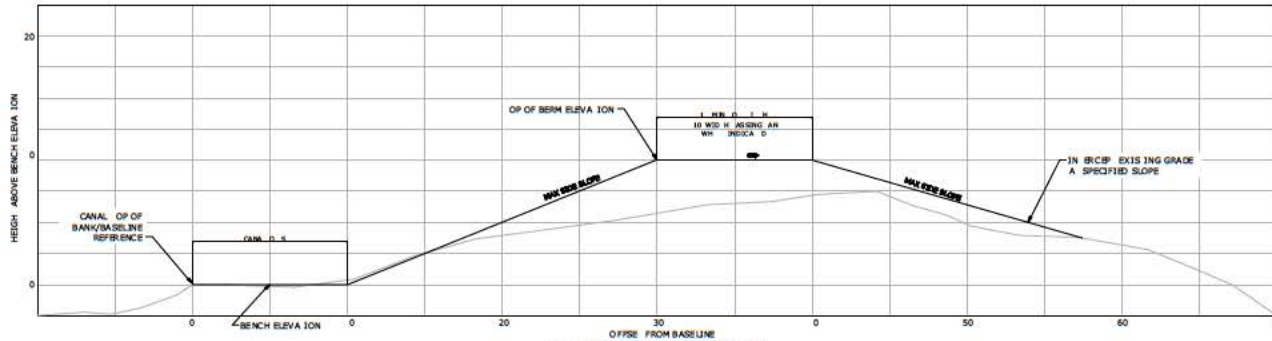
DATE	FEBRUARY 2017
HAZEN NO.	455 29-008
CON RAC NO.	
DRAWING NUMBER	G01

BERM GEOMETRY TYPE

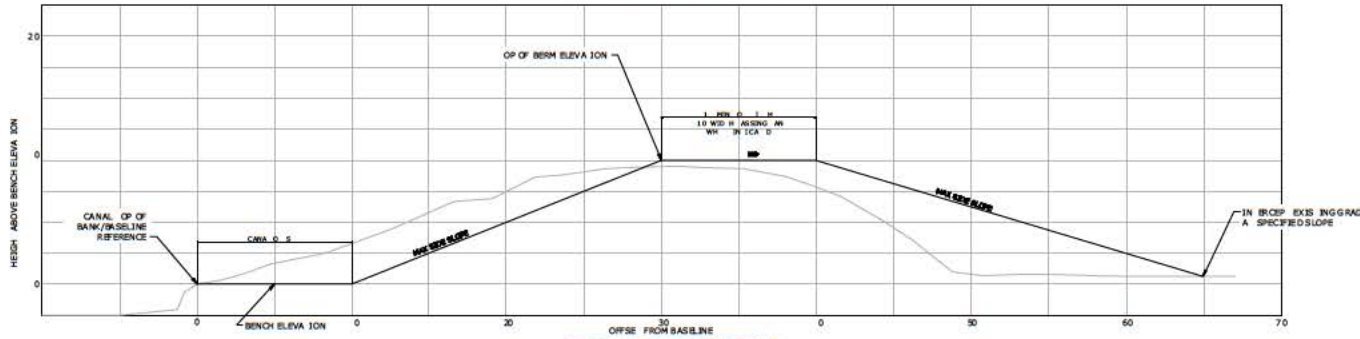
	CANAL OFFSET	BENCH ELEVATION	TOP OF BERM ELEVATION	MAX SIDE SLOPE
BERM A	14 FT	25 FT	34 40 FT	3:1
BERM B	14 FT	25 FT	31 00 FT	3:1
BERM C	14 FT	23 FT	31 00 FT	3:1
BERM D	14 FT	24 FT	31 00 FT	3:1
BERM E	18 FT	24 FT	31 00 FT	3:1
BERM F	18 FT	25 FT	32 20 FT	3:1
BERM G	11 FT	28 FT	32 20 FT	3:1
BERM H	11 FT	28 FT	34 40 FT	3:1
BERM I	15 FT	28 FT	34 40 FT	3:1
BERM J	14 FT	EG	32 40 FT	2 5:1
BERM K	14 FT	EG	30 20 FT	2 5:1

NOTES:

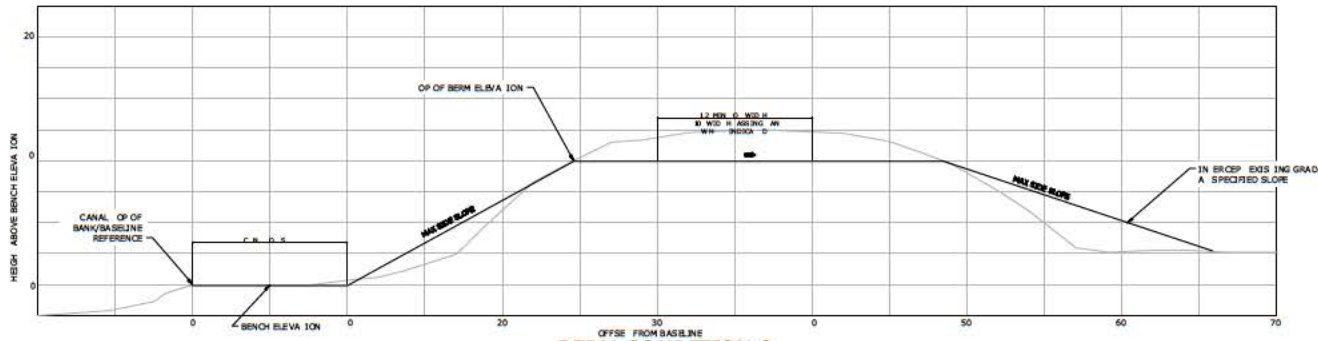
- 1 ALL ELEVATIONS SHOWN PER NORTH AMERICAN VERTICAL DATUM (NAVD 88)
- 2 PASSING LANES SHALL BE INCLUDED EVERY 5000 FEET ALONG THE BERMS
- 3 TOP OF BERM SURFACES SHALL BE STABILIZED AND VEGETATED



BERM CONDITION 1



BERM CONDITION 2



BERM CONDITION 3

PROJ. NO.	11000000000000000000
DATE	11/11/17
SCALE	1" = 20'
DESIGNED BY	ACE
DRAWN BY	ACE
CHECKED BY	
IF THIS BAR DOES NOT MEASURE TO THE DRAWING IS NOT TO SCALE	
PROJ. ENG.	CRG
DESIGNED BY	ACE
DRAWN BY	ACE
CHECKED BY	
IF THIS BAR DOES NOT MEASURE TO THE DRAWING IS NOT TO SCALE	
PROJ. ENG.	CRG
DESIGNED BY	ACE
DRAWN BY	ACE
CHECKED BY	
IF THIS BAR DOES NOT MEASURE TO THE DRAWING IS NOT TO SCALE	

PRELIMINARY DRAWING
DO NOT USE FOR CONSTRUCTION

Hazen
HAZEN AND SAWYER
200 CORPORATE BOULEVARD, SUITE 30
BOCA RATON, FLORIDA 3343
LICENSE NO. 277

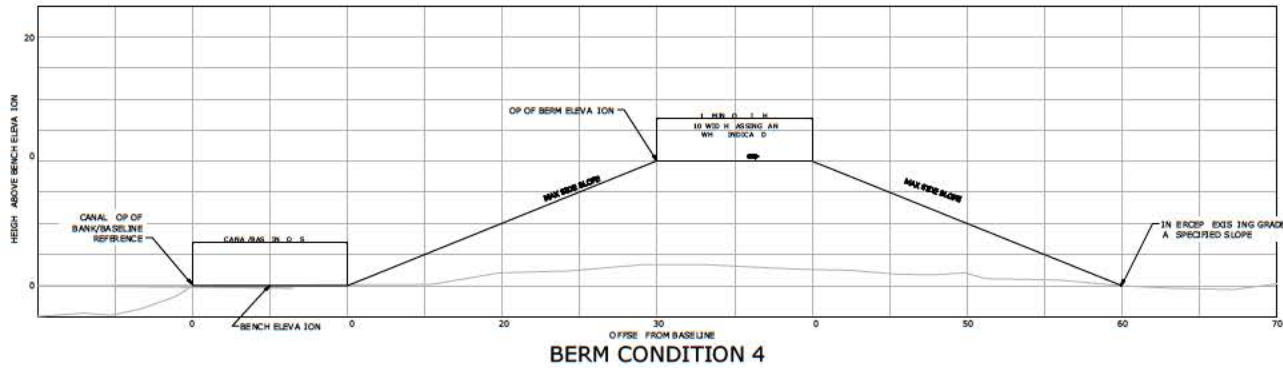
OKEECHOBEE
FLORIDA

SCOTT WATER FARM DESIGN

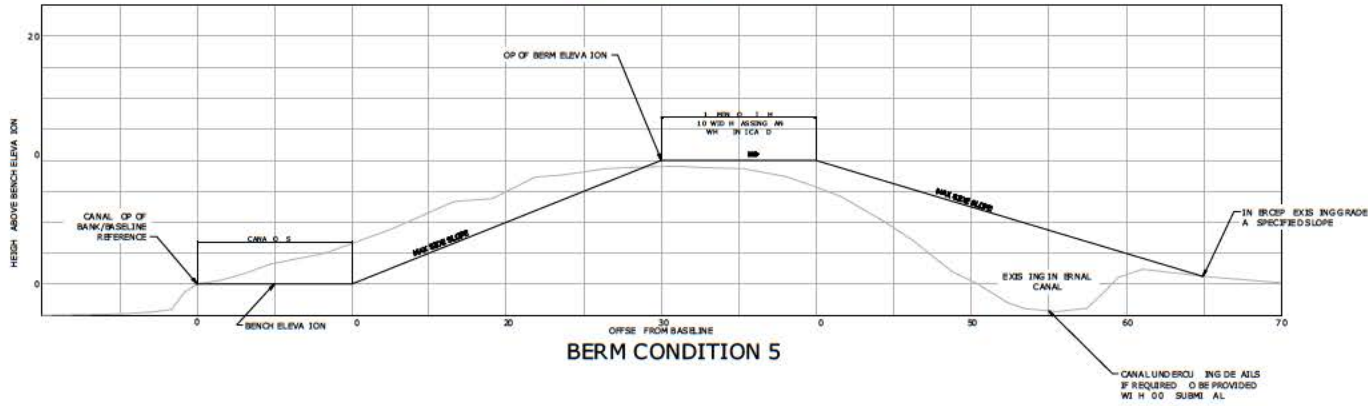
SCOTT 6000
CIVIL
BERM SECTIONS

DRAWING NUMBER

DATE	FEBRUARY 2017
HAZEN NO.	45529-008
CONTRACT NO.	
DRAWING NUMBER	G02



BERM CONDITION 4



BERM CONDITION 5

BERM GEOMETRY TYPE

	CANAL OFFSET	BENCH ELEVATION	TOP OF BERM ELEVATION	MAX SIDE SLOPE
BERM A	14 FT	25 FT	34 40 FT	3:1
BERM B	14 FT	25 FT	31 00 FT	3:1
BERM C	14 FT	23 FT	31 00 FT	3:1
BERM D	14 FT	24 FT	31 00 FT	3:1
BERM E	18 FT	24 FT	31 00 FT	3:1
BERM F	18 FT	25 FT	32 20 FT	3:1
BERM G	11 FT	28 FT	32 20 FT	3:1
BERM H	11 FT	28 FT	34 40 FT	3:1
BERM I	15 FT	28 FT	34 40 FT	3:1
BERM J	14 FT	EG	32 40 FT	2 5:1
BERM K	14 FT	EG	30 20 FT	2 5:1

NOTES:

- ALL ELEVATIONS SHOWN PER NOR H AMERICAN VERTICAL DATUM (NAVD 88)
- PASSING LANES SHALL BE INCLUDED EVERY 5000 FEET ALONG THE BERMS
- OP OF BERM SURFACES SHALL BE STABILIZED AND VEGETATED

DATE PLOTTED: 02/02/2017 10:00 AM
 PLOTTER: HP DesignJet T1100e
 FILE: I:\Projects\2017\02\02\00000000.dwg
 USER: scott@hazenandawyer.com
 PLOT SCALE: 1"=20'

PROJ EC	CRG			
ENGINEER				
DESIGNED BY	ACE			
DRAWN BY	ACE			
CHECKED BY				
IF THIS BAR DOES NOT MEASURE TO LENGTH IN THIS DRAWING IS NOT TO SCALE	0 1/2" = 1'			
REV	1	LED FOR	DATE	BY

PRELIMINARY DRAWING
DO NOT USE FOR CONSTRUCTION

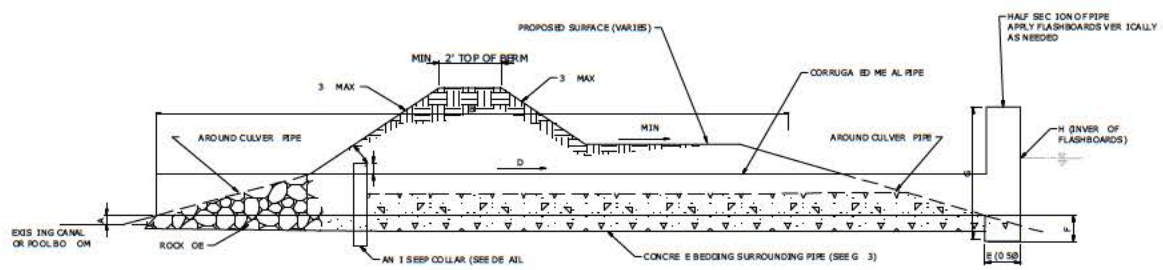
Hazen
 HAZEN AND SAWYER
 200 CORPORATE BOULEVARD, SUITE 30
 BOCA RATON, FLORIDA 3343
 LICENSE NO. 277

OKEECHOBEE
 FLORIDA
 SCOTT WATER FARM DESIGN

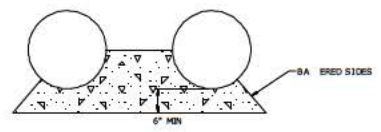
SCOTT 6000
 CIVIL
 BERM SECTIONS

DATE	FEBRUARY 2017
HAZEN NO.	45529-008
CONTRACT NO.	
DRAWING NUMBER	G03

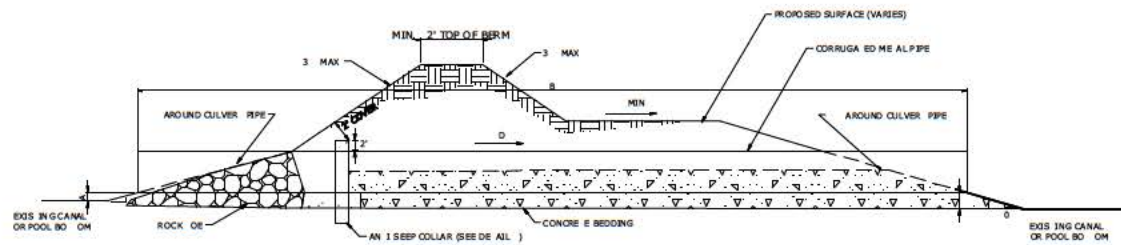
- NOTES:**
- SEE PLAN FOR LOCATIONS
 - RIP RAP EXPOSED AREA OF PIPES
 - SLOPE ALL GRADE BELOW INVERT TO EXISTING CANAL/POOL BOTTOM ELEVATIONS
 - CONTRACTOR SHALL DETERMINE PROPOSED CULVERT SLOPE OF SLOPE OF PROPOSED BERMS SO AS TO MAINTAIN THE BERM COLLAPSE RISK OR ERM ON SHEET FOR THE GIVEN LOCATION
 - EROSION PROTECTION SEEPAGE CONTROL AND RASH RACK SPECIFICATIONS TO BE PROVIDED AS PER DESIGN



DETAIL G4-1
CULVERT WITH FLASHBOARD RISER STRUCTURE



DETAIL G4-3
CONCRETE BEDDING



DETAIL G4-2
NO RISER STRUCTURES

DETAIL G4-4
SEEPAGE CONTROL DETAILS PENDING

PROPOSED CULVERT DETAILS -SCOTT 6000											
D	NO. BARRELS	MATERIAL	DIAMETER	DIMENSIONS							
				A	B	C	D	E	F	G	H
1	2	CM	50	15	60	15	0.005 FT/FT	TBD	TBD	TBD	TBD
2	2	CM	60	15	80	15	0.005 FT/FT	TBD	TBD	TBD	TBD
3	2	CM	60	15	60	15	0.005 FT/FT	TBD	TBD	TBD	TBD
4	2	CM	50	15	80	15	0.005 FT/FT	TBD	TBD	TBD	TBD
4	2	CM	50	15	160	15	0.005 FT/FT	TBD	TBD	TBD	TBD

HAZEN AND SAWYER ENGINEERS, INC. 2017 FEBRUARY 2017
 THE SCOTT 6000 CULVERT DESIGN IS BASED ON HAZEN AND SAWYER DESIGN MANUAL, 2017 EDITION.

PROJ. ENGINEER	ORG.
DESIGNED BY	ARA
DRAWN BY	ARA
CHECKED BY	
IF THIS BAR DOES NOT MEASURE WHEN DRAWING IS NOT TO FULL SCALE	
REV.	1. USED FOR DATE BY

PRELIMINARY DRAWING
DO NOT USE FOR CONSTRUCTION

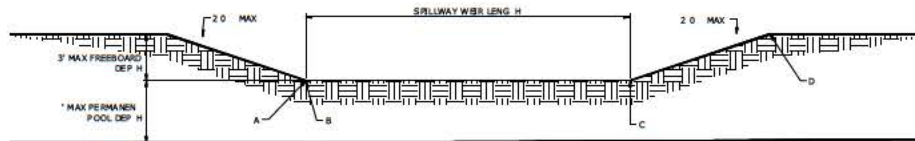
Hazen
 HAZEN AND SAWYER
 200 CORPORATE BOULEVARD, SUITE 30
 BOCA RATON, FLORIDA 3343
 LICENSE NO. 277

OKEECHOBEE FLORIDA
 SCOTT WATER FARM DESIGN

SCOTT 6000 CIVIL
 CULVERT DETAILS

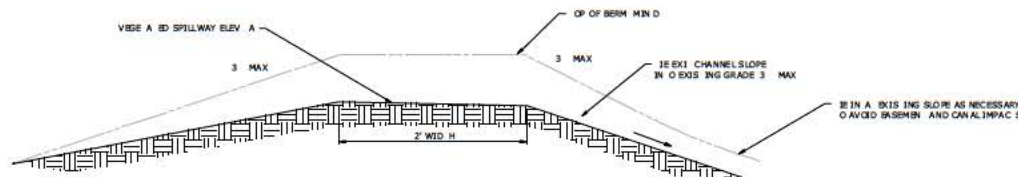
DATE	FEBRUARY 2017
HAZEN NO.	45529-008
CONTRACT NO.	
DRAWING NUMBER	G04

NOTES:
 1. IF EMERGENCY SPILLWAY CHANNEL IS LOCATED IN FILL CONDITIONS THE FLOW PATH CAN BE VEGETATED. IF EMERGENCY SPILLWAY IS LOCATED IN FILL CONDITIONS THE FLOW CHANNEL AND SIDE OF FLOW SIDE SLOPES IN THE CHANNEL SHALL BE ARMORED WITH RIPRAP.
 2. SPILLWAY REINFORCEMENT AND GRADING DETAILS WILL BE PROVIDED WITH THE 00 DESIGN SUBMITTAL.



**EMERGENCY SPILLWAY
 LONGITUDINAL PROFILE
 NTS**

PROPOSED SPILLWAY DETAILS - SCOTT 6000 PROPERTY					
SPILLWAY LOCATION	WEIR LENGTH	DIMENSION	STATIONING		DIMENSION
			A	B	
NORTHEAST CORNER OUTER BERM	1000 FT	28 00 FT	194+00	204+00	31 00 FT
SOUTHEAST INTERNAL BERM	500 FT	29 20 FT	1005+00	1010+00	31 20 FT
WESTERN INTERNAL BERM	500 FT	31 40 FT	2060+00	2065+00	33 40 FT



**EMERGENCY SPILLWAY
 SECTION VIEW
 NTS**

HAZEN AND SAWYER ENGINEERS, P.C. 1000 BOCA RATON BOULEVARD, SUITE 300 BOCA RATON, FLORIDA 33432
 DATE PLOTTED: 1/24/2017 10:52 AM
 FILE: S:\PROJECTS\2016\20160201\SCOTT_6000\DWG\SPILLWAY.DWG
 PLOT BY: JLM/ML

PROJ. NO.	16000	PROJ. NAME	SCOTT 6000
DATE	1/24/2017	DRAWN BY	ARA
REV	1	DESCRIPTION	FOR CONSTRUCTION
DATE	1/24/2017	DESIGNED BY	ARA
		CHECKED BY	
		SCALE	AS SHOWN
		PROJ. ENG.	CRG
		DATE	1/24/2017

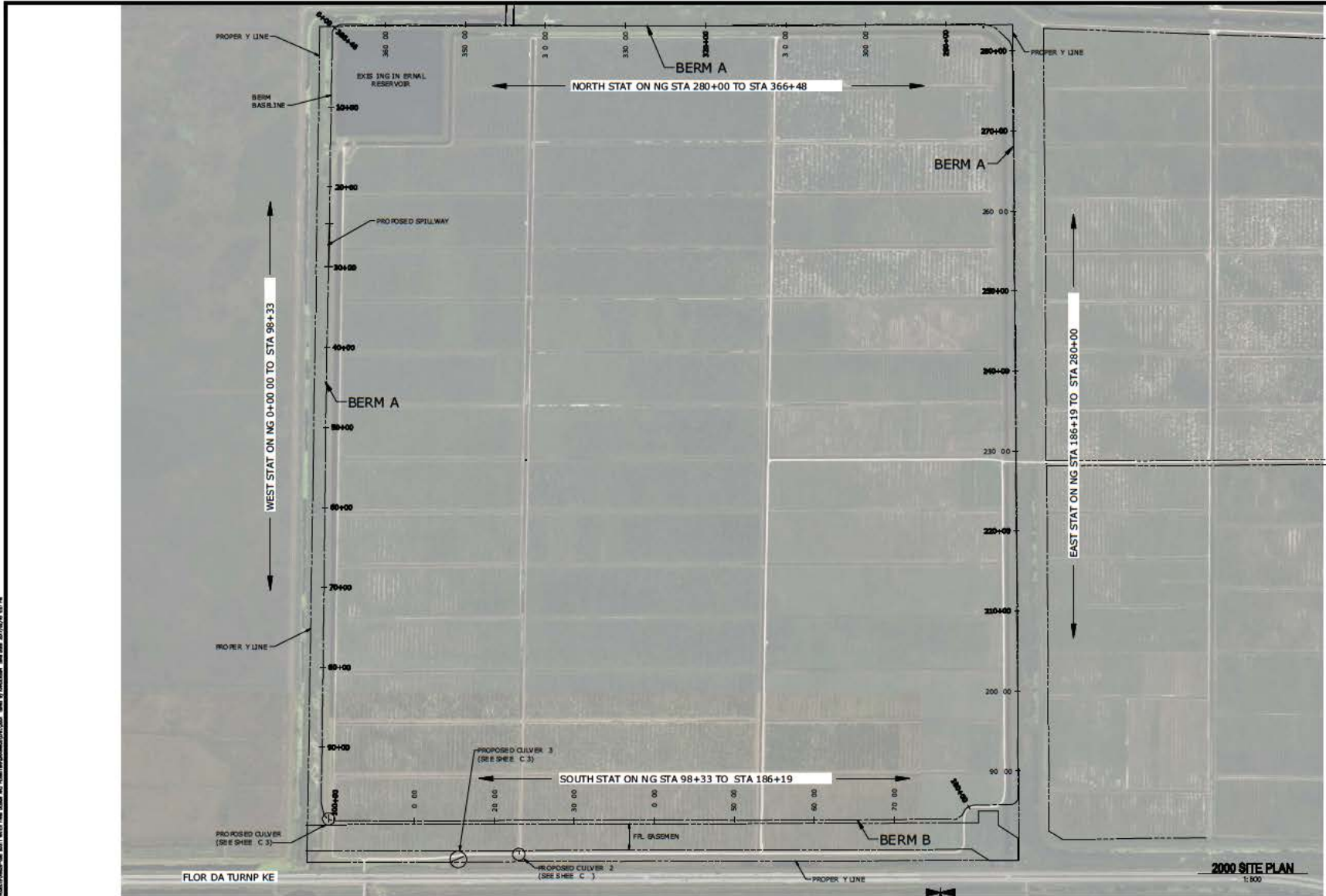
PRELIMINARY DRAWING
 DO NOT USE FOR
 CONSTRUCTION

Hazen
 HAZEN AND SAWYER
 200 CORPORATE BOULEVARD, SUITE 300
 BOCA RATON, FLORIDA 33432
 LICENSE NO. 277

OKEECHOBEE
 FLORIDA
 SCOTT WATER FARM DESIGN

SCOTT 6000
 CIVIL
 SPILLWAY DETAILS

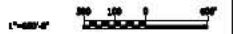
DATE	FEBRUARY 2017
HAZEN NO.	45529-008
ODM PAC NO.	
DRAWING NUMBER	G05



- NOTE:
- BOUNDARY SURVEY SUPPLIED BY LBPH (03/28/2006)
 - STATIONING FOLLOWS APPROXIMATE CANAL OF BANK. SEE SHEET 002 AND 003 FOR BERM SECTIONS.
 - ALL EDGES OF CANAL AND ROAD LINES ARE APPROXIMATE AND WERE DELINEATED USING OR PHOTOGRAPHY. FINAL LOCATIONS SHALL BE DETERMINED DURING CONSTRUCTION TAKE-OUT.
 - ALL CURVES PROPOSED IN THIS DRAWING IS APPROXIMATE AND RAC OR SHALL PROVIDE SPECIFIC TURNING RADIUS CALCULATIONS UPON FINALIZATION OF REVIEW AND HIS.
 - GRADING SHALL OCCUR FROM THE BASELINE TOWARD THE IN ERROR OF THE PROPERTY UNLESS SPECIFICALLY NOTED OTHERWISE.
 - VERTICAL ALIGNMENT FOR ALL ELEVATIONS IS NORTH AMERICAN VERTICAL ALIGNMENT OF 1988 (NAVD 88).
 - BERM GEOMETRY OF ALL CANAL CROSSINGS TO BE INCLUDED WITH THIS SUBMIT ALL CANAL CROSSINGS.



2000 SITE PLAN
1:600



NO. 1000	DESIGN SUBMITAL	DATE	BY	PROJ. EC.	CRG
1	DESIGN SUBMITAL	2/20/15	DAE	ENGINEER	CRG
2	DESIGN SUBMITAL	2/20/15	DAE	DESIGNED BY	C.R.G.
3	DESIGN SUBMITAL	2/20/15	DAE	DRAWN BY	F.C.B./E.S.H.
4	DESIGN SUBMITAL	2/20/15	DAE	CHECKED BY	
5	DESIGN SUBMITAL	2/20/15	DAE	IF THIS BAR DOES NOT MEASURE WHEN DRAWING IS NOT TO FULL SCALE	0' 12"
REV	1	USED FOR	DAE	BY	

PRELIMINARY DRAWING
DO NOT USE FOR
CONSTRUCTION



HAZEN AND SAWYER
200 CORPORATE BOULEVARD, SUITE 30
BOCA RATON, FLORIDA 3343
LICENSE NO. 277

EVANS PROPERTIES

SCOTT WATER FARM DESIGN

SCOTT 2000 CIVIL
OVERALL PLAN

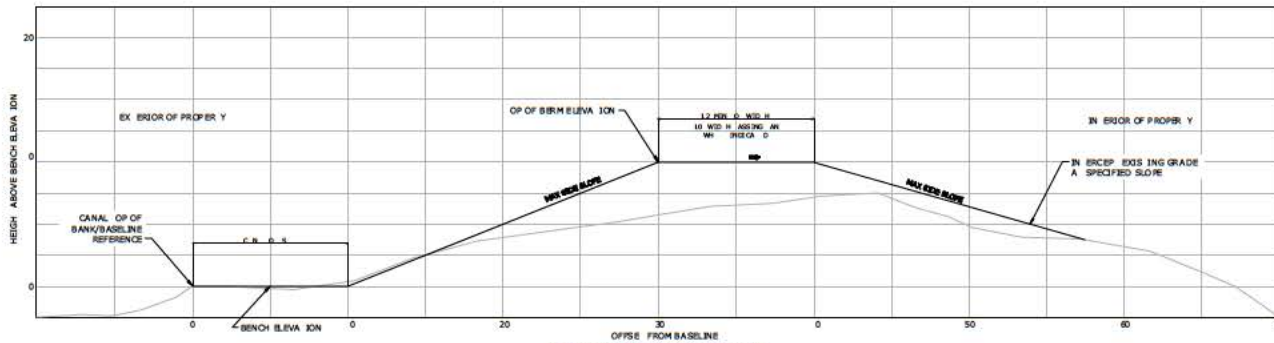
DATE	FEBRUARY 2017
HAZEN NO.	45529-008
CON. RAC. NO.	
DRAWING NUMBER	2G01

BERM GEOMETRY TYPE

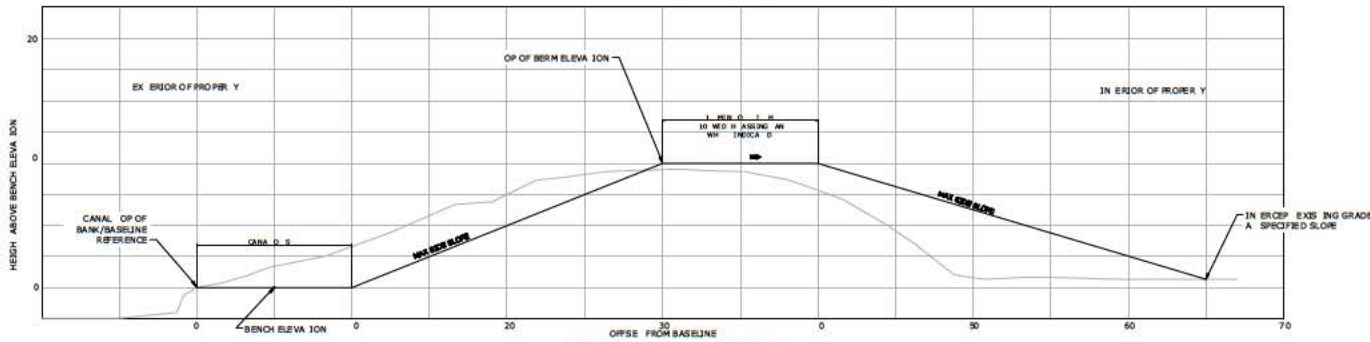
	CANAL OFFSET	BERM ELEVATION	TOP OF BERM ELEVATION	MAX SIDE SLOPE
BERM A	10 FT	25.00 FT	31.25 FT	3:1
BERM B	10 FT	25.00 FT	28.00 FT	3:1

NOTES:

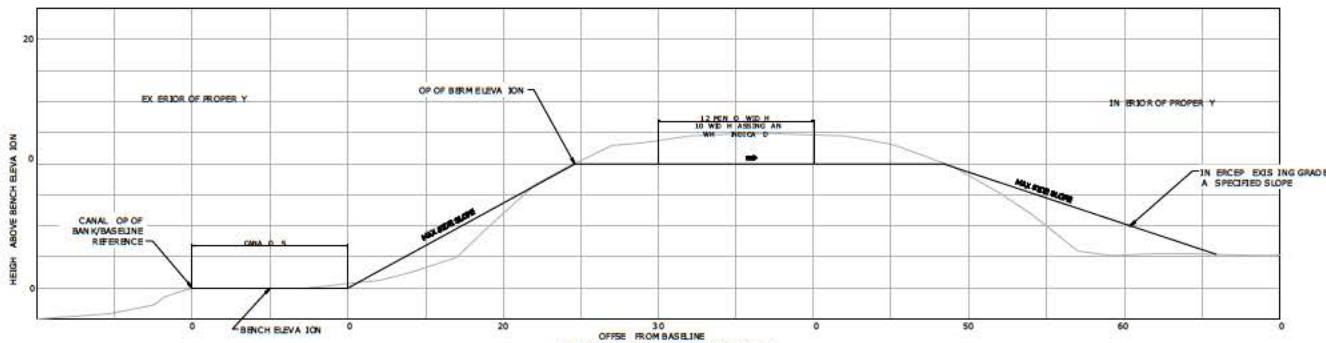
- ALL ELEVATIONS SHOWN PER NORTH AMERICAN VERTICAL DATUM (NAVD 88)
- PASSING LANES SHALL BE INCLUDED EVERY 5000 FEET ALONG THE BERM
- TOP OF BERM SURFACES SHALL BE STABILIZED AND VEGETATED



BERM CONDITION 1



BERM CONDITION 2



BERM CONDITION 3

NOT SCALE. SEE DRAWING 2017.02.01.01 FOR SCALE. ALL DIMENSIONS ARE IN FEET AND INCHES. UNLESS OTHERWISE SPECIFIED, DIMENSIONS ARE TO FACE.

NO.	DATE	BY	DESCRIPTION
1	02/20/17	DAE	DESIGN SUBMITTAL

PROJ. NO.	CRG
ENGINEER	CRG
DESIGNED BY	ACE
DRAWN BY	ACE
CHECKED BY	

IF THIS BAR DOES NOT MEASURE * THEN DRAWING IS NOT TO FULL SCALE

0' 1/2" = 1'

PRELIMINARY DRAWING
DO NOT USE FOR CONSTRUCTION

Hazen
 HAZEN AND SAWYER
 200 CORPORATE BOULEVARD, SUITE 30
 BOCA RATON, FLORIDA 33433
 LICENSE NO. 277

EVANS PROPERTIES
 SCOTT WATER FARM DESIGN

SCOTT 2000
 CIVIL
 BERM SECTIONS

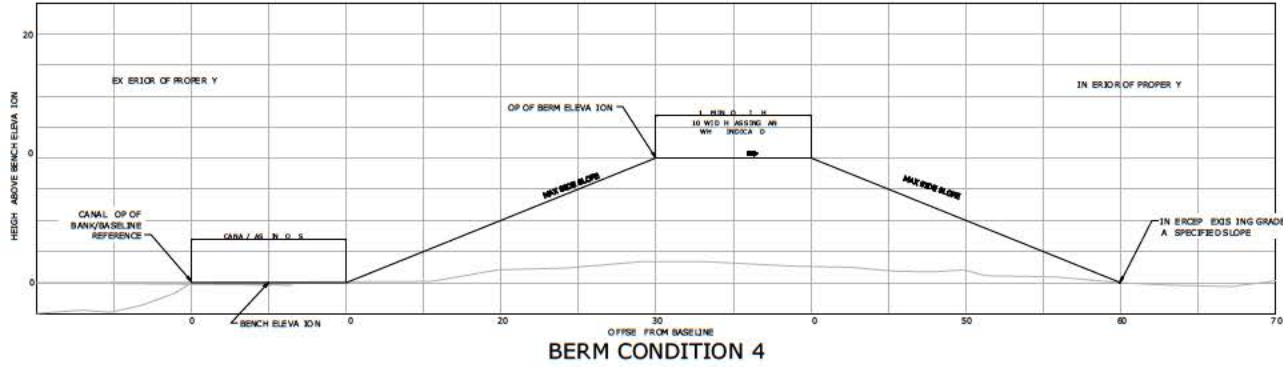
DATE	FEBRUARY 2017
HAZEN NO.	45529-008
CON. RAC. NO.	
DRAWING NUMBER	2G02

BERM GEOMETRY TYPE

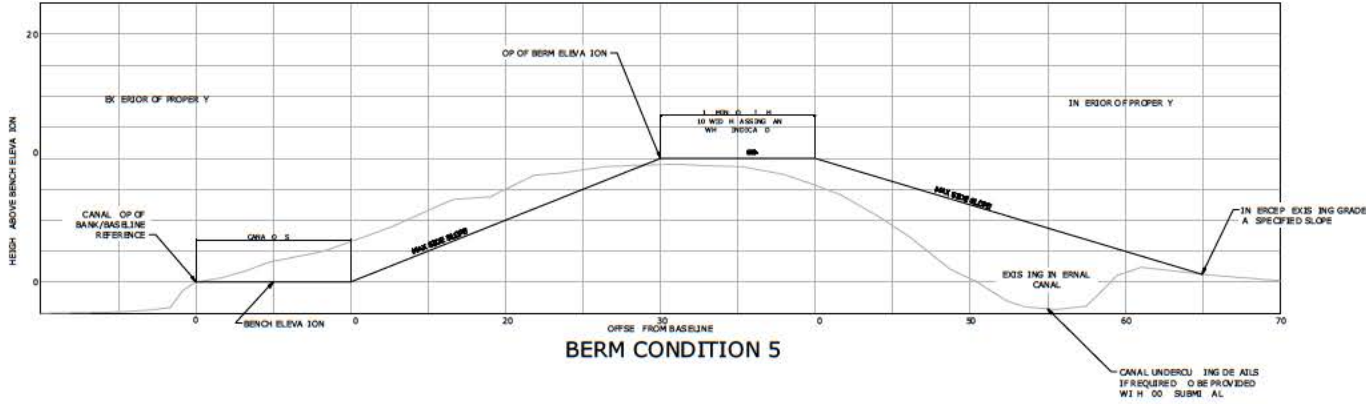
	CANAL OFFSET	BENCH ELEVATION	TOP OF BERM ELEVATION	MAX SIDE SLOPE
BERM A	10 FT	25.00 FT	31.25 FT	3:1
BERM B	10 FT	25.00 FT	28.00 FT	3:1

NOTES:

- 1 ALL ELEVATIONS SHOWN PER NORTH AMERICAN VERTICAL DATUM (NAVD 88)
- 2 PASSING LANES SHALL BE IN GRADE EVERY 5000 FEET ALONG THE BERMS



BERM CONDITION 4



BERM CONDITION 5

HAZEN AND SAWYER, INC. 2017 FEBRUARY 15, 2017 10:00 AM
 PROJECT: SCOTT WATER FARM DESIGN
 DRAWING: CIVIL BERM SECTIONS
 SHEET: 2G03

PROJ. EC.	CRG
ENGINEER	
DESIGNED BY	ACE
DRAWN BY	ACE
CHECKED BY	
DATE	2/20/17
SCALE	AS SHOWN
NO. DESIGN SUBMITTALS	2/20/17
REV	1 USED FOR: DATE: BY:

PRELIMINARY DRAWING
DO NOT USE FOR
CONSTRUCTION

Hazen
 HAZEN AND SAWYER
 200 CORPORATE BOULEVARD, SUITE 30
 BOCA RATON, FLORIDA 3343
 LICENSE NO. 277

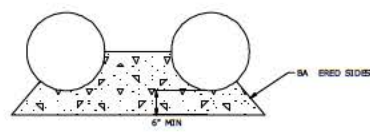
EVANS PROPERTIES

SCOTT WATER FARM DESIGN

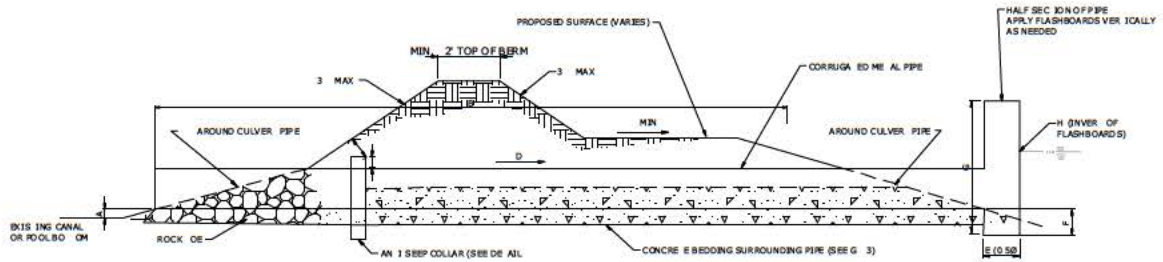
SCOTT 2000
 CIVIL
 BERM SECTIONS

DATE	FEBRUARY 2017
HAZEN NO.	455 29-008
CONTRACT NO.	
DRAWING NUMBER	2G03

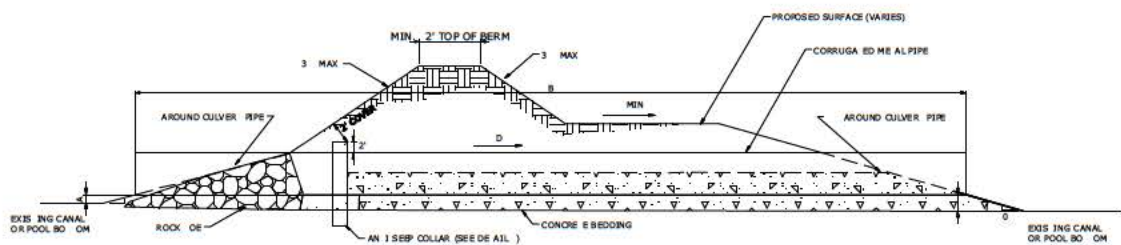
- NOTES:**
- SEE PLAN FOR LOCATIONS
 - RIP RAP EXPOSED AREA OF PIPES
 - SLOPE ALL GRADE BELOW INVERT TO EXISTING CANAL/POOL BOTTOM ELEVATIONS
 - CONTRACTOR SHALL VERIFY PROPOSED CULVERT SLOPE OF SLOPE OF PROPOSED BERMS SO AS TO MEET THE BERM COLLAPSE CRITERIA ON SHEET FOR THE GIVEN LOCATION
 - EROSION PROTECTION SEEPAGE CONTROL AND FLASHBACK SPECIFICATIONS TO BE PROVIDED AND DESIGN



DETAIL G4-3
CONCRETE BEDDING



DETAIL G4-1
CULVERT WITH FLASHBOARD RISER STRUCTURE



DETAIL G4-2
NO RISER STRUCTURES

DETAIL G4-4
SEEPAGE CONTROL DETAILS PENDING

PROPOSED CULVERT DETAILS -SCOTT 2000											
D	NO BARS	E MATERIAL	D AMETER	D MENS ON							
				A	B	C	D	E	F	G	H
1	2	CM	50	15	140	15	0.005 FT/FT	TBD	TBD	TBD	TBD
2	2	CM	40	15	60	15	0.005 FT/FT	TBD	TBD	TBD	TBD
3	2	CM	40	15	160	15	0.005 FT/FT	TBD	TBD	TBD	TBD

NO. 1	DESIGN	SCOTT	2/20/17	CRG
NO. 2	DESIGN	SCOTT	2/20/17	ARA
NO. 3	DESIGN	SCOTT	2/20/17	ARA
NO. 4	DESIGN	SCOTT	2/20/17	ARA
NO. 5	DESIGN	SCOTT	2/20/17	ARA
NO. 6	DESIGN	SCOTT	2/20/17	ARA
NO. 7	DESIGN	SCOTT	2/20/17	ARA
NO. 8	DESIGN	SCOTT	2/20/17	ARA
NO. 9	DESIGN	SCOTT	2/20/17	ARA
NO. 10	DESIGN	SCOTT	2/20/17	ARA
NO. 11	DESIGN	SCOTT	2/20/17	ARA
NO. 12	DESIGN	SCOTT	2/20/17	ARA
NO. 13	DESIGN	SCOTT	2/20/17	ARA
NO. 14	DESIGN	SCOTT	2/20/17	ARA
NO. 15	DESIGN	SCOTT	2/20/17	ARA
NO. 16	DESIGN	SCOTT	2/20/17	ARA
NO. 17	DESIGN	SCOTT	2/20/17	ARA
NO. 18	DESIGN	SCOTT	2/20/17	ARA
NO. 19	DESIGN	SCOTT	2/20/17	ARA
NO. 20	DESIGN	SCOTT	2/20/17	ARA
NO. 21	DESIGN	SCOTT	2/20/17	ARA
NO. 22	DESIGN	SCOTT	2/20/17	ARA
NO. 23	DESIGN	SCOTT	2/20/17	ARA
NO. 24	DESIGN	SCOTT	2/20/17	ARA
NO. 25	DESIGN	SCOTT	2/20/17	ARA
NO. 26	DESIGN	SCOTT	2/20/17	ARA
NO. 27	DESIGN	SCOTT	2/20/17	ARA
NO. 28	DESIGN	SCOTT	2/20/17	ARA
NO. 29	DESIGN	SCOTT	2/20/17	ARA
NO. 30	DESIGN	SCOTT	2/20/17	ARA

PRELIMINARY DRAWING
DO NOT USE FOR
CONSTRUCTION

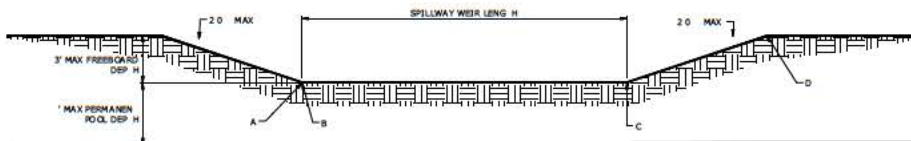
Hazen
HAZEN AND SAWYER
20 CORPORATE BOULEVARD, SUITE 30
BOCA RATON, FLORIDA 3343
LICENSE NO. 277

EVANS PROPERTIES
SCOTT WATER FARM DESIGN

SCOTT 2000 CIVIL
CULVERT DETAILS

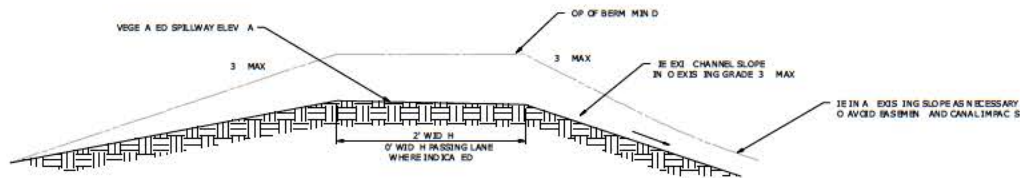
DATE	FEBRUARY 2017
HAZEN NO.	45529-008
CONTRACT NO.	
DRAWING NUMBER	2G04

- NOTES:
1. IF EMERGENCY SPILLWAY CHANNEL IS LOCATED IN FILL CONDITIONS THE FLOW CHANNEL SHOULD BE VEGETATED. IF EMERGENCY SPILLWAY IS LOCATED IN EXISTING CONDITIONS THE FLOW CHANNEL AND SIDE SLOPES IN THE CHANNEL SHALL BE ARMORED WITH RIPRAP.
 2. SPILLWAY REINFORCEMENTS AND GRADING DETAILS WILL BE PROVIDED WITH THE DESIGN SUBMITTAL.



EMERGENCY SPILLWAY
 LONGITUDINAL PROFILE
 NTS

PROPOSED SPILLWAY DETAILS - BLUEFIELD PROPERTY					
SPILLWAY LOCATION	WEIR LENGTH	DIMENSIONS	STATIONING		DIMENSIONS
			A	B	
EAST SIDE OF ROAD PROPERTY	1000 FT	26 50 FT	555+00	565+00	29 50 FT



EMERGENCY SPILLWAY
 SECTION VIEW
 NTS

HAZEN AND SAWYER
 2020 CORPORATE BOULEVARD, SUITE 300
 BOCA RATON, FLORIDA 33433
 TEL: 561.996.8800 FAX: 561.996.8801 WWW.HAZENANDSAWYER.COM
 DATE PLOTTED: 02/03/17 10:38 AM
 PLOT BY: JAMES W. HAZEN
 HAZEN AND SAWYER ENGINEERS, INC. 45529 008

NO.	REVISION	DATE	BY	DESCRIPTION
1	USED FOR	DATE	BY	
PROJECT ENGINEER		CRG		
DESIGNED BY		ARA		
DRAWN BY		ARA		
CHECKED BY				
IF THIS BAR DOES NOT MEASURE WHEN DRAWING IS NOT AT FULL SCALE				

PRELIMINARY DRAWING
 DO NOT USE FOR
 CONSTRUCTION

Hazen

HAZEN AND SAWYER
 20 CORPORATE BOULEVARD, SUITE 30
 BOCA RATON, FLORIDA 33433
 CERTIFICATE OF AUTHORIZATION No. 277

EVANS PROPERTIES

SCOWAER FARM DESIGN

CIVIL
 SPILLWAY DETAILS

DATE	FEBRUARY 2017
HAZEN NO.	45529 008
CONTRACT NO.	1
DRAWING NUMBER	2G05

NOTES:

THIS KEY MAP PROVIDES NORTHING AND EASTING LOCAL COORDINATES FOR THE CENTER OF EACH PUMP STATION. LOCAL COORDINATES ARE GIVEN WITH THE BLUEFIELD GROVE WATER FARM AREA. EACH OF THESE STATION LOCATIONS IS A NORTHING/EASTING COORDINATE. AXIAL FLOW PUMPS OR BOWEN, WHICH REQUIRE RELOCATION ON THE CONSTRUCTION.

2. DRAINAGE STATIONS TO SERVE LOCAL ZONED FLOW IN THE CASE WHEN NOT INCLUDED IN 50 PERCENT DESIGN.



NAME	NORTHING	EASTING
5043	75570.3	759969.49
5044	80856.02	750067.09
5045	756.3	753036.46
5046	80873.94	76350.96
5097	8875.27	757786.26
EAG PUMP HOUSE	69833.26	759834.97
PUMPS A 10N No. 0	69079.88	757252.96
PUMPS A 10N No. 02	6498.29	757249.44
PUMPS A 10N No. 03	58245.5	757252.3
PUMPS A 10N No. 04	69448.87	75965.80
PUMPS A 10N No. 05	6467.87	75972.7
PUMPS A 10N No. 06	5823.06	75972.2
PUMPS A 10N No. 07	69424.96	746677.52
PUMPS A 10N No. 08	6445.73	746682.73
PUMPS A 10N No. 09	6849.28	759564.45
PUMPS A 10N No. 09	58848.29	74668.8
PUMPS A 10N No. 0	6629.47	75735.64
PUMPS A 10N No. 2	6055.88	75979.99
PUMPS A 10N No. 2	6246.73	748939.06
SCO 2000 PS	73383.82	759987.70
URBAN PUMP A 10N	7244.70	758203.35

PROJ. EC.	R.B.T.
ENG. NEER	
DESIGNED BY	F.R.H.
DRAWN BY	E.S.H.
CHECKED BY	J.C.K.
P.H.S. BAR DOES NOT MEASURE WHEN DRAWN IN 1" = 20' FULL SCALE	
REV.	1. USED FOR

PRELIMINARY DRAWING
DO NOT USE FOR
CONSTRUCTION

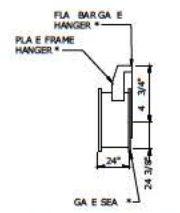
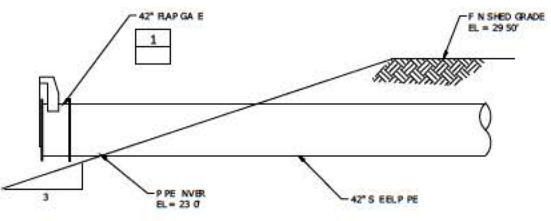
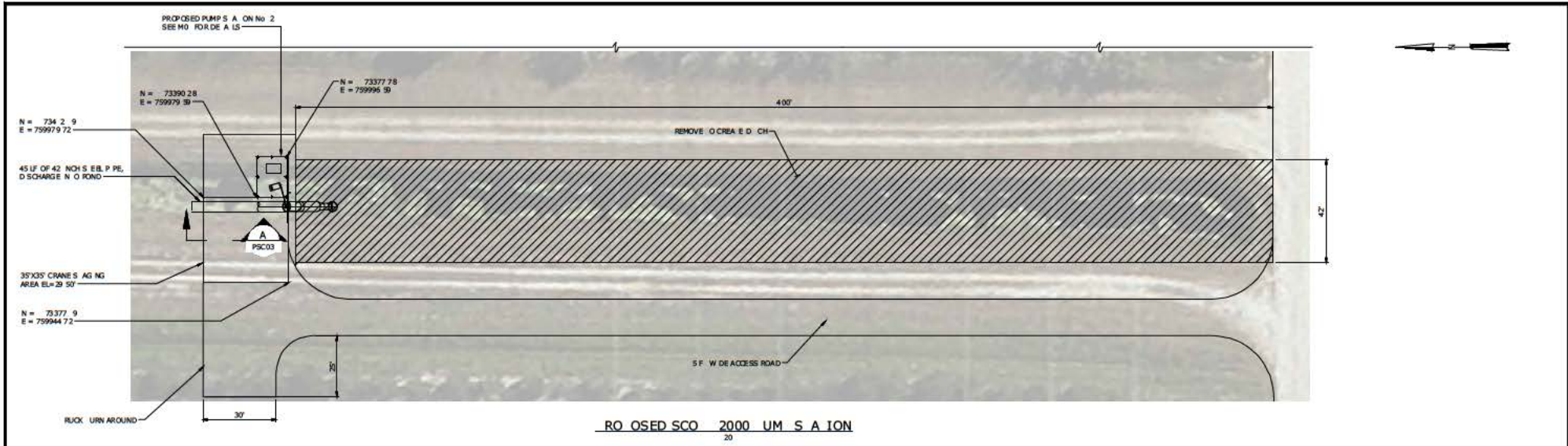
HAZEN AND SAWYER
200 CORPORATE BOULEVARD, SUITE 30
BOCA RATON, FLORIDA 3343
LICENSE NO. 277

EVANS PROPERTIES

SCOTT WATER FARM DESIGN

CIVIL
SCOTT PUMP STATIONS KEY MAP

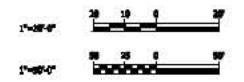
DATE	FEBRUARY 2017
HAZEN NO.	45529-008
CONTRACT NO.	
DRAWING NUMBER	PSC01



NOT :
FLAP GATE FOR DISCHARGE B. MW OR EQUAL

SECTION A
42" x 42"

FLAP GATE FOR DISCHARGE
DETAIL 1



PROJ. EC.	R.B.T.
DESIGNED BY	F.R.H.
DRAWN BY	E.S.H.
CHECKED BY	J.C.K.
P.H.S. BAR DOES NOT MEASURE WHEN DRAWN AT 1/2" = 1' SCALE	
REV. 1	USED FOR DATE BY

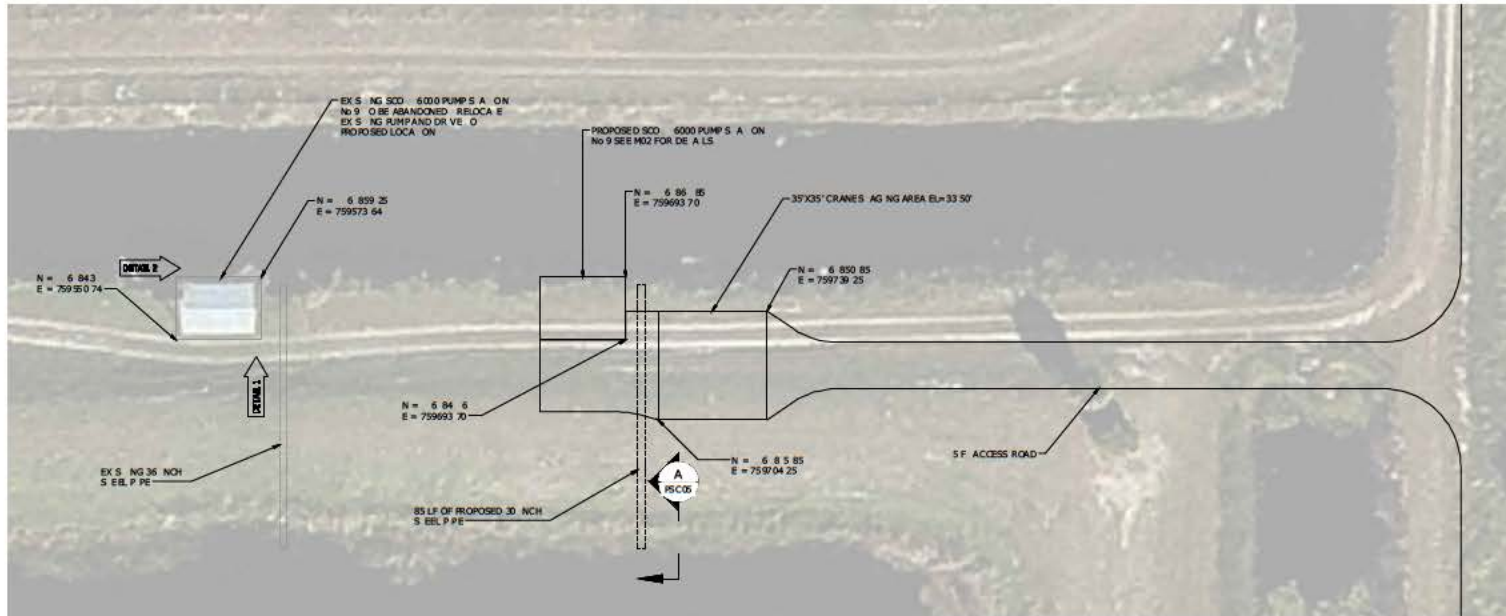
PRELIMINARY DRAWING
DO NOT USE FOR
CONSTRUCTION

Hazen
AND SAWYER
20 CORPORATE BOULEVARD, SUITE 30
BOCA RATON, FLORIDA 3343
LICENSE NO. 277

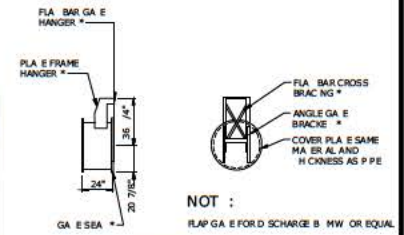
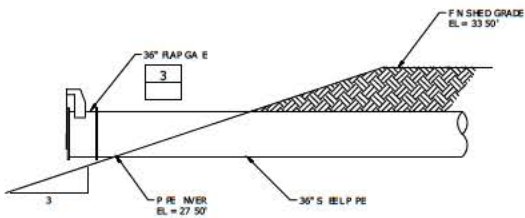
EVANS PROPERTIES
SCOTT WATER FARM DESIGN

CIVIL
SCOTT 2000 PUMP STATION
PROPOSED

DATE	FEBRUARY 2017
HAZEN NO.	45529-008
CONTRACT NO.	
DRAWING NUMBER	PSC03



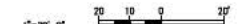
SCOTT 6000 UM STATION NO 9
20



NOT :
FLAP GA E FOR D S CHARGE B MW OR EQUAL

* IN ACCORDANCE W H A S M A 35

FLAP GATE FOR D S CHARGE



SECTION A
1/4"=50' 0"

1

2

PROJ EC	R.B.T.
ENG NEER	
DES GNEE D	F.R.H.
DRAWN B	E.S.H.
CHECKE D B	J.C.K.
P H S BAR DOES NO MEASURE * WHEN DRAW NG S NO O R FULL SCALE	
REV	1 UED FOR
DA E	BY

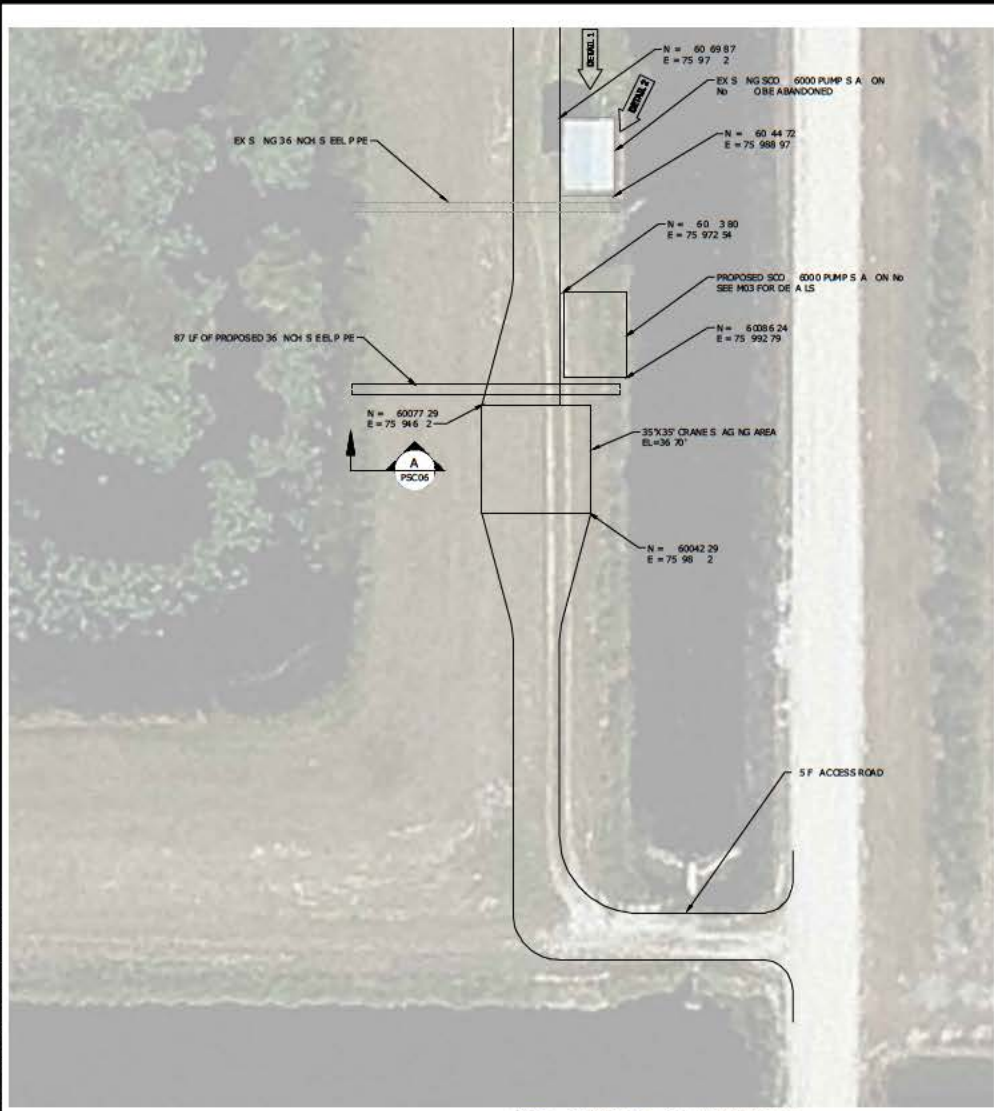
PREL M NARY DRAW NG
DO NOT USE FOR
CONSTRUCT ON

Hazen
HAZEN AND SAWYER
20 CORPORATE BOULEVARD, SUITE 30
BOCA RATON, FLORIDA 33443
LICENSE NO. 277

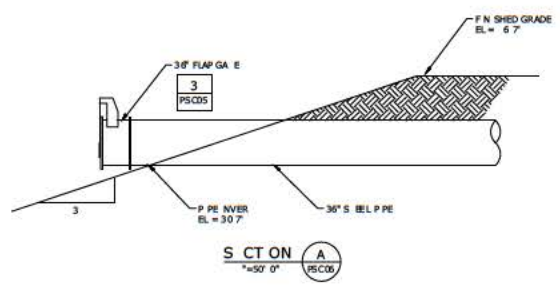
EVANS PROPERTIES
SCOTT WATER FARM DESIGN

CIVIL
SCOTT 6000 PUMP STATION No 9
PLAN

DA E	FEBRUARY 2017
HAZEN NO	45529-008
CON RAC NO	
DRAW NG NUMBER	PSC05



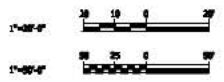
SCOT 6000 UM S A ION NO 11



1



2



PROJ EC	R.B.T.
ENG NEER	
DES GNEE B	F.R.H.
DRAWN B	E.S.H.
CHECKED B	J.C.K.
P H S BAR DOES NO MEASURE * HEN DRAW NG S NO O R U L SCALE	
REV	1 UED FOR
DA E	BY

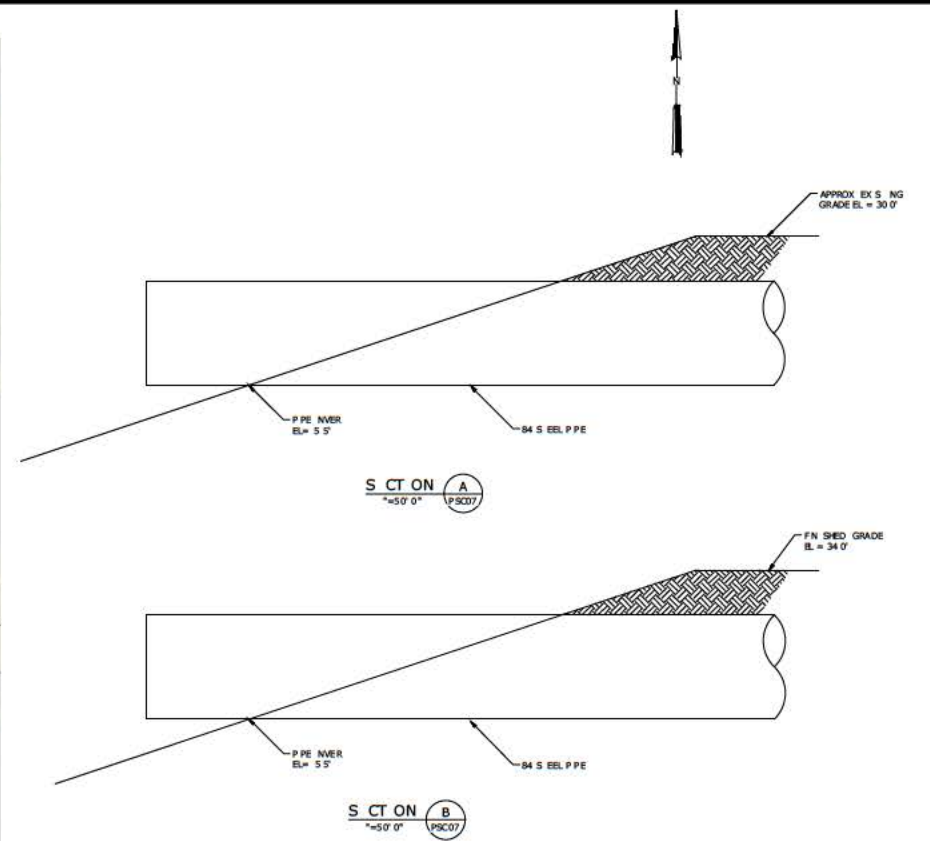
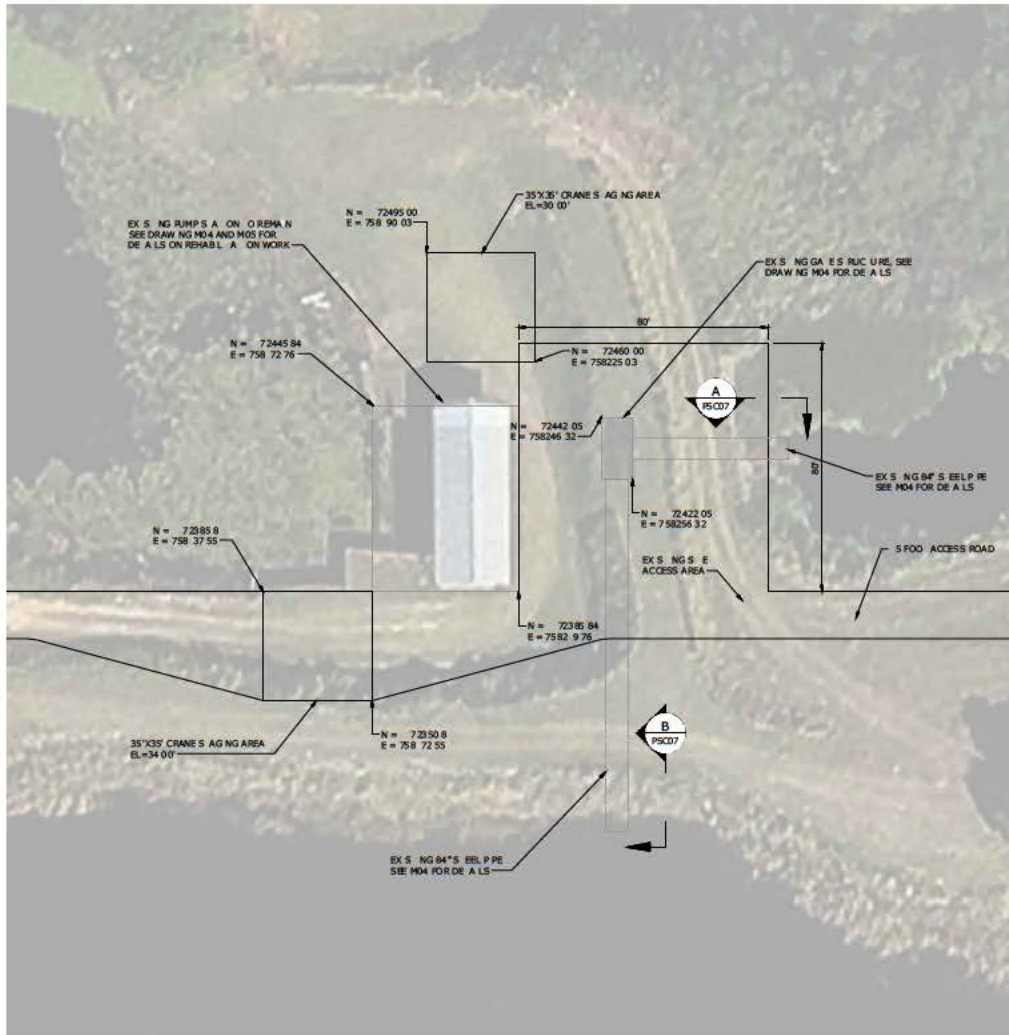
PREL M NARY DRAW NG DO NOT USE FOR CONSTRUCT ON

Hazen
 HAZEN AND SAWYER
 2 0 CORPORATE BOULEVARD, SUITE 30
 BOCA RATON, FLORIDA 3343
 LICENSE NO. 277

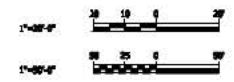
EVANS PROPERTIES
 SCOTT WATER FARM DESIGN

CIVIL
 SCOTT 6000 PUMP STATION No. 11
 PLAN

DA E	FEBRUARY 2017
HAZEN NO	45529-008
CON RAC NO	
DRAW NG NUMBER	PSC06



EXISTING SCOTT 6000 TURNPIKE PUMP STATION LAYOUT



PROJ EC	R.B.T.
DESIGNED BY	F.R.H.
DRAWN BY	E.S.H.
CHECKED BY	J.C.K.
DATE	
BY	

PRELIMINARY DRAWING
DO NOT USE FOR
CONSTRUCTION

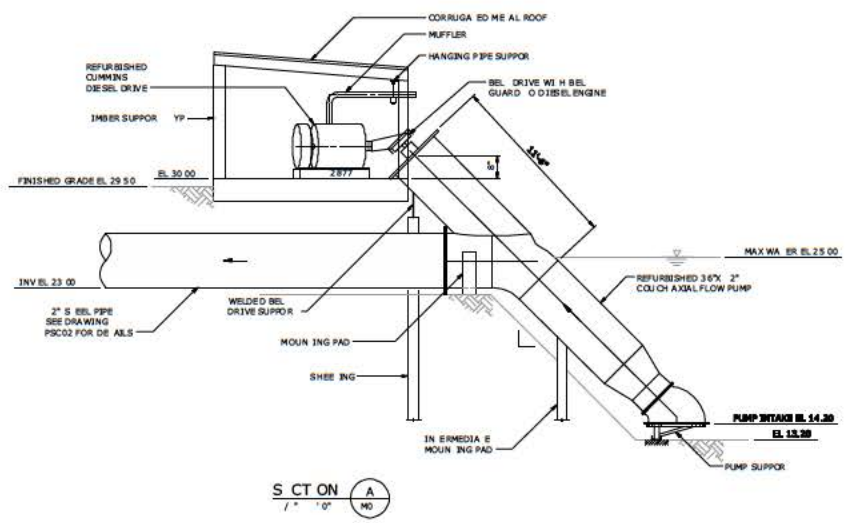
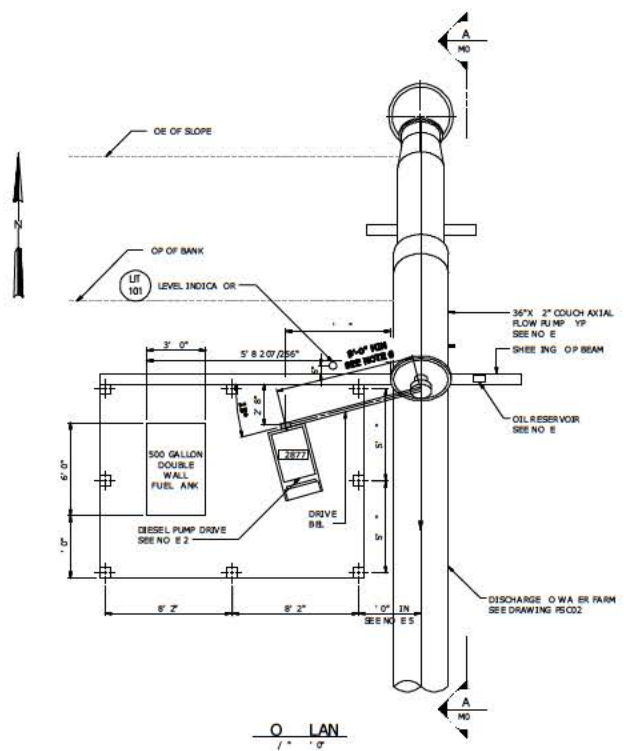
Hazen
HAZEN AND SAWYER
20 CORPORATE BOULEVARD, SUITE 30
BOCA RATON, FLORIDA 3343
LICENSE NO. 277

EVANS PROPERTIES
SCOTT WATER FARM DESIGN

CIVIL
SCOTT 6000 TURNPIKE PUMP
STATION EXISTING

DATE	FEBRUARY 2017
HAZEN NO	45529-008
CONTRACT NO	
DRAWING NUMBER	PSC07

- NOTES:**
- REFURBISH EXISTING 36" X 2" AXIAL FLOW COLLICH PUMP SERIAL No 5 99 SEE DRAWING PSC02 FOR DETAILS
 - REFURBISH EXISTING CUMMINS DIESEL DRIVE SERIAL No 09578 9 SEE DRAWING PSC02 FOR DETAILS
 - SEE STRUCTURAL DRAWINGS FOR DETAILSON SHEETING AND BUILDING NOT INCLUDED WITH THIS SET
 - MOUNT OIL RESERVOIR ON SHEETING SEE STRUCTURAL DRAWINGS NOT INCLUDED WITH THIS SET
 - CONTRACTOR TO ADVISE HIS DIMENSIONS COORDINATE WITH PUMP SPECIFIC BEL LENGTH
 - CONTRACTOR TO COORDINATE EXACT DIMENSION PER PUMP MANUFACTURER



DATE: 02/01/2017 10:18 AM BY: JCK
 FILE: C:\PROJECTS\2017\2017_02_01\2017_02_01.dwg
 PLOT: 02/01/2017 10:18 AM BY: JCK
 PLOT: 02/01/2017 10:18 AM BY: JCK

PROJ. NO.	17-00000	ENGINEER	R.B.T.
DESIGNED BY	F.R.H.	DRAWN BY	K.E.W.
CHECKED BY	J.C.K.		
IF THIS BAR DOES NOT MEASURE WHEN DRAWING IS PRINTED AT FULL SCALE	0 1/2" = 1'		
REV	1	USED FOR	DATE

PRELIMINARY DRAWING
DO NOT USE FOR
CONSTRUCTION

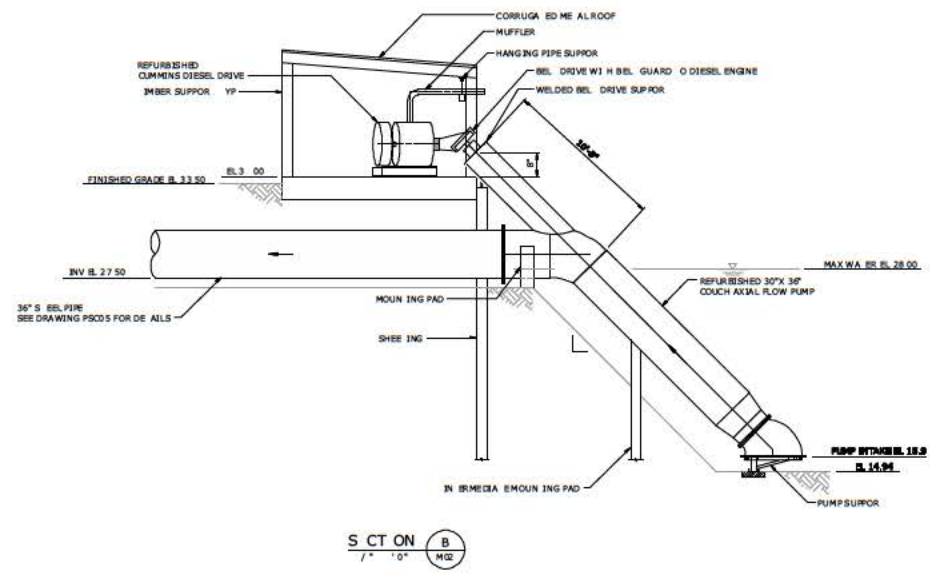
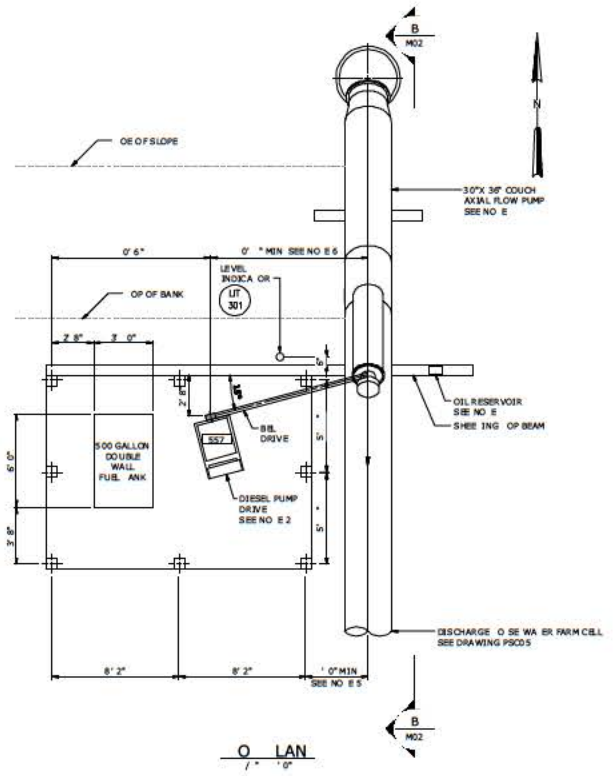
Hazen
HAZEN AND SAWYER
200 CORPORATE BOULEVARD, SUITE 30
BOCA RATON, FLORIDA 3343
LICENSE NO. 277

EVANS PROPERTIES
SCOTT WATER FARM DESIGN

SCOTT 2000 PUMP STATION
MECHANICAL
PLAN AND SECTION

DATE	FEBRUARY 2017
HAZEN NO.	45529-008
CONTRACT NO.	
DRAWING NUMBER	M01

- NOTES:**
- REFURBISH EXISTING 36" X 2" AXIAL FLOW COUCH PUMP SERIAL NO AL 0892. SEE DRAWING PSC02 FOR DETAILS.
 - REFURBISH EXISTING CUMMINS DIESEL DRIVE SERIAL NO RG6076 8 897. SEE DRAWING PSC02 FOR DETAILS.
 - SEE STRUCTURAL DRAWINGS FOR DETAILSON SHEETING AND BUILDING. NOT INCLUDED WITH SET.
 - MOUNT OIL RESERVOIR ON SHEETING. SEE STRUCTURAL DETAILS. NOT INCLUDED WITH SET.
 - CONTRACTOR TO ADVISE DIMENSIONS COORDINATE WITH PUMP SPECIFIC LENGTH.
 - CONTRACTOR TO COORDINATE EXACT DIMENSION PER PUMP MANUFACTURER.



NOT TO SCALE
 ALL DIMENSIONS UNLESS OTHERWISE SPECIFIED ARE IN FEET AND INCHES. SEE DRAWING PSC02 FOR DETAILS.
 DATE: 02/01/2017 10:43 AM
 BY: J.C.K.

PROJ. NO.	17010			
ENGINEER	R.B.T.			
DESIGNED BY	F.R.H.			
DRAWN BY	K.E.W.			
CHECKED BY	J.C.K.			
IF THIS BAR DOES NOT MEASURE 1/2" WHEN DRAWING IS NOT TO FULL SCALE	0 1/2"			
REV	1	USED FOR	DATE	BY

PRELIMINARY DRAWING
DO NOT USE FOR
CONSTRUCTION

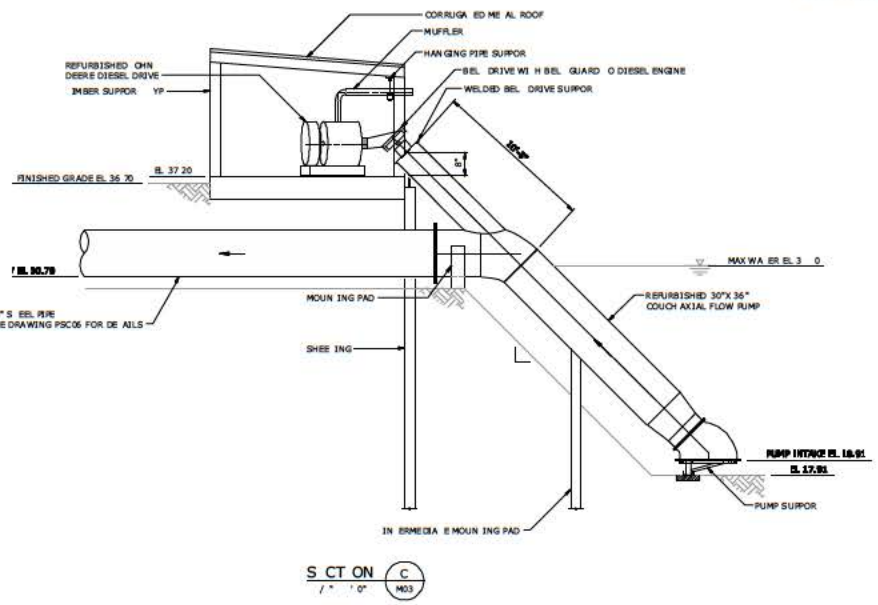
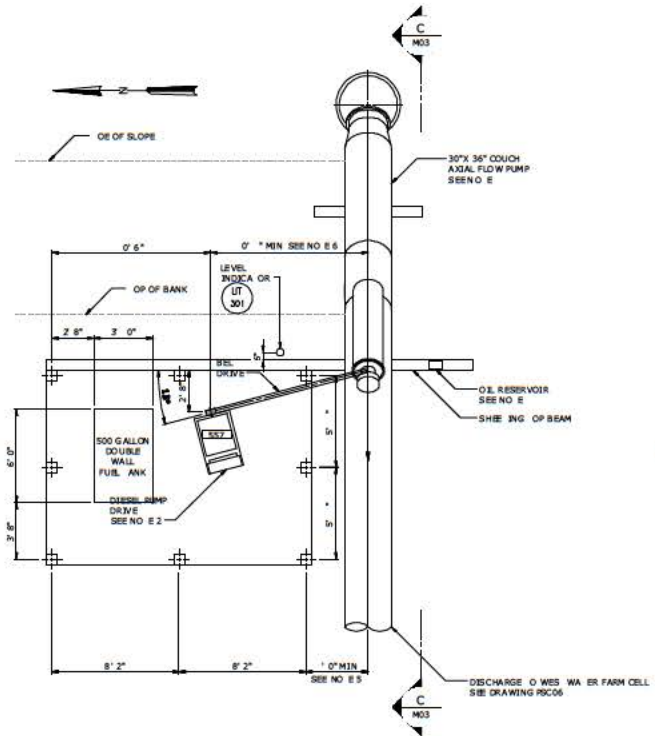
Hazen
 HAZEN AND SAWYER
 200 CORPORATE BOULEVARD, SUITE 300
 BOCA RATON, FLORIDA 33433
 LICENSE NO. 277

EVANS PROPERTIES
 SCOTT WATER FARM DESIGN

SCOTT 6000 PUMP STATION NO. 9
 MECHANICAL
 PLAN AND SECTION

DATE	FEBRUARY 2017
HAZEN NO.	45529-008
CONTRACT NO.	
DRAWING NUMBER	M02

- NOTES:**
- REFURBISH EXISTING 30" X 36" AXIAL FLOW PUMPS SERIAL NO. AL 792 SEE DRAWING PSC02 FOR DETAILS
 - REFURBISH EXISTING OHN DIESEL 40 HP DIESEL PUMP DRIVE SERIAL NO. RG6076 8 898 SEE DRAWING PSC02 FOR DETAILS
 - SEE STRUCTURAL DRAWINGS FOR DETAILS OF SHEETING AND BUILDING NOT INCLUDED WITH THIS SET
 - MONITOR OIL RESERVOIR POSITION SEE STRUCTURAL DRAWINGS NOT INCLUDED WITH THIS SET
 - CONTRACTOR TO ADVISE HIS DIMENSIONS OF COORDINATE WITH PUMP SPECIFIC BELONGING
 - CONTRACTOR TO COORDINATE EXACT DIMENSIONS PER PUMP MANUFACTURER



PLAN
1" = 0'

SECTION C
1" = 0'

0 2 3 7
1" = 0'

PROJECT	SCOTT 6000 PUMP STATION NO. 11
DATE	FEBRUARY 2017
DESIGNED BY	F.R.H.
DRAWN BY	K.E.W.
CHECKED BY	J.C.K.
IF HIS BAR DOES NOT MEASURE WITHIN DRAWING IS NOT TO FULL SCALE	
REV	1 - USED FOR DATE BY

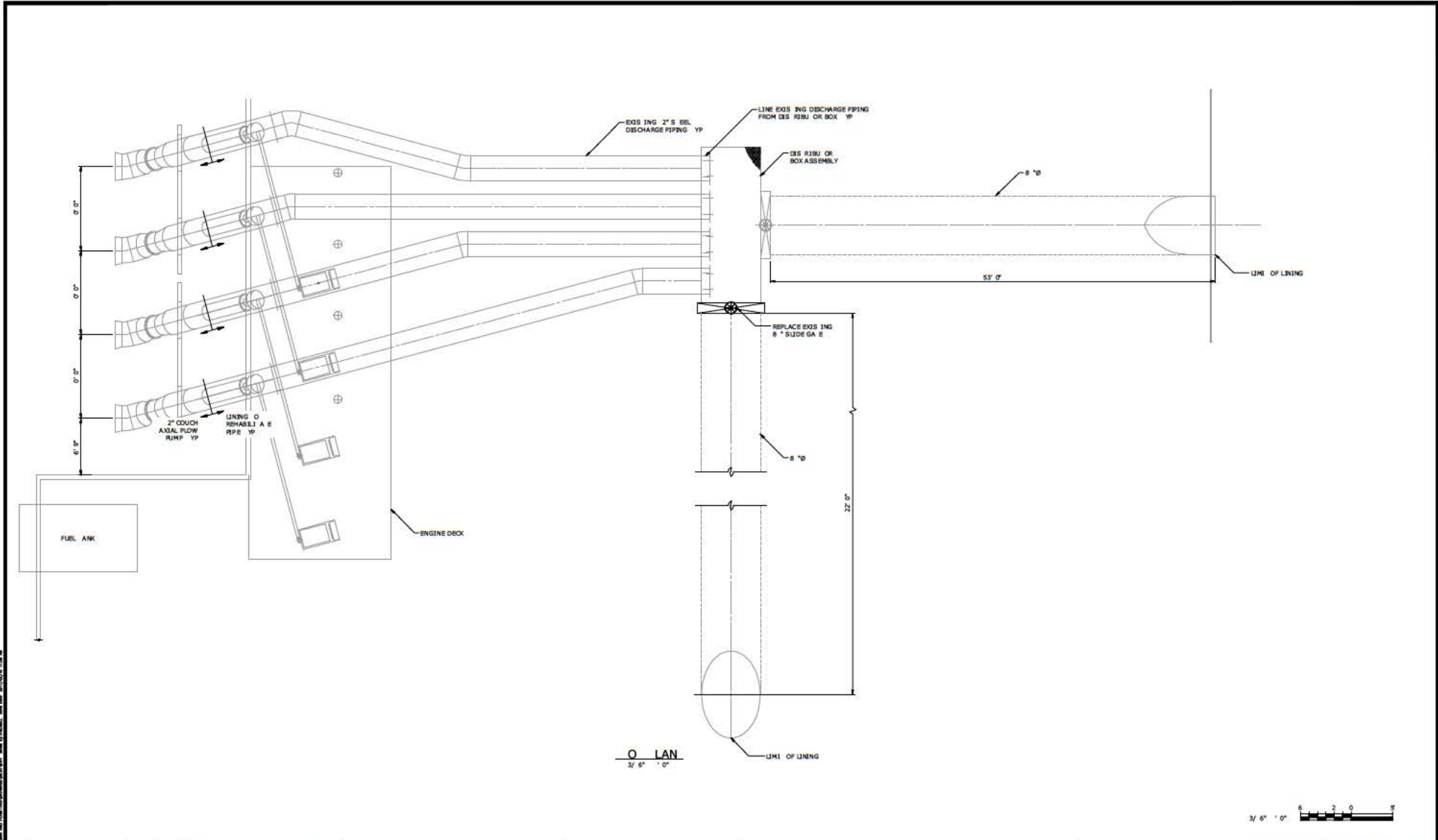
PRELIMINARY DRAWING
DO NOT USE FOR
CONSTRUCTION

Hazen
HAZEN AND SAWYER
200 CORPORATE BOULEVARD, SUITE 30
BOCA RATON, FLORIDA 3343
LICENSE NO. 277

EVANS PROPERTIES
SCOTT WATER FARM DESIGN

SCOTT 6000 PUMP STATION NO. 11
MECHANICAL
PLAN AND SECTION

DATE	FEBRUARY 2017
HAZEN NO.	45529-008
CONTRACT NO.	
DRAWING NUMBER	M03



PLAN
3/8" = 1'-0"

3/8" = 1'-0"

NO. 1	DESIGNED BY	R.B.T.
NO. 2	DESIGNED BY	F.R.H.
NO. 3	DRAWN BY	K.E.W.
NO. 4	CHECKED BY	J.C.K.
NO. 5	IF THIS BAR DOES NOT MEASURE TO THIS DRAWING IS NOT TO SCALE	0" = 1'-0"
REV	1	USED FOR DATE BY

PRELIMINARY DRAWING
DO NOT USE FOR CONSTRUCTION

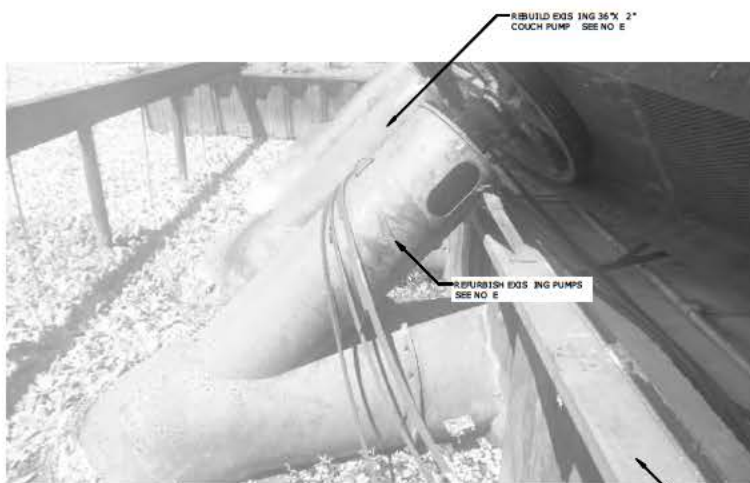
Hazen
HAZEN AND SAWYER
200 CORPORATE BOULEVARD, SUITE 30
BOCA RATON, FLORIDA 3343
LICENSE NO. 277

EVANS PROPERTIES
SCOTT WATER FARM DESIGN

SCOTT 6000 TURNPIKE PUMP
STATION
MECHANICAL
PLAN AND SECTION

DATE	FEBRUARY 2017
HAZEN NO.	45529-008
CONTRACT NO.	
DRAWING NUMBER	M04

- NOTES:**
- REFURBISH EXISTING 36" COUCH AXIAL FLOW PUMPS IN PLACE OF SEE DRAWING PSC02 FOR DEALS
 - REFURBISH EXISTING CUMMINS DIESEL DRIVERS SERIAL Nos 3537 27 7 6 2 0 69 8 AND 30 5295 SEE DRAWING PSC02 FOR DEALS
 - REPLACE EXISTING DIESEL STORAGE TANKS WITH 500 GALLON DOUBLE WALL CONCRETE TANKS SEE DRAWING PSC02 FOR DEALS



HO 01
N S

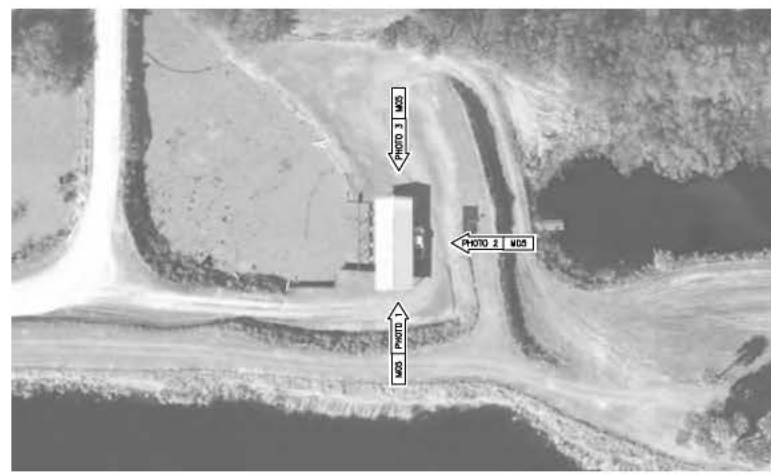
SANDBLAST AND COAT EXISTING SHEET PILE DRAWING PSC02 FOR DEALS



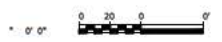
HO 02
N S



HO 03
N S



AERIAL KEYMAP
0 0



PROJ EC	R.B.T.
ENGINEER	
DESIGNED BY	F.R.H.
DRAWN BY	K.E.W.
CHECKED BY	J.C.K.
IF THIS BAR DOES NOT MEASURE WHEN DRAWING IS NOT TO FULL SCALE	
0	12"

PRELIMINARY DRAWING
DO NOT USE FOR
CONSTRUCTION

Hazen
HAZEN AND SAWYER
20 CORPORATE BOULEVARD, SUITE 30
BOCA RATON, FLORIDA 3343
LICENSE NO. 277

EVANS PROPERTIES
SCOTT WATER FARM DESIGN

SCOTT 6000 TURNPIKE PUMP
STATION
MECHANICAL
PHOTO ILLUSTRATIONS

DATE	FEBRUARY 2017
HAZEN NO	45529-008
CON. RAC. NO	
DRAWING NUMBER	M05

DATE PLOTTED: 02/14/17 10:45 AM
PLOT FILE: C:\PROJECTS\45529-008\45529-008-M05-17.dwg
PLOT DEVICE: HP DesignJet 5000 Series
PLOT SCALE: 1.0000
PLOT SHEET: 1 OF 1